

From BigBrain to fMRI: the role of hemodynamic modeling

HIBALL meeting, 26 June 2020

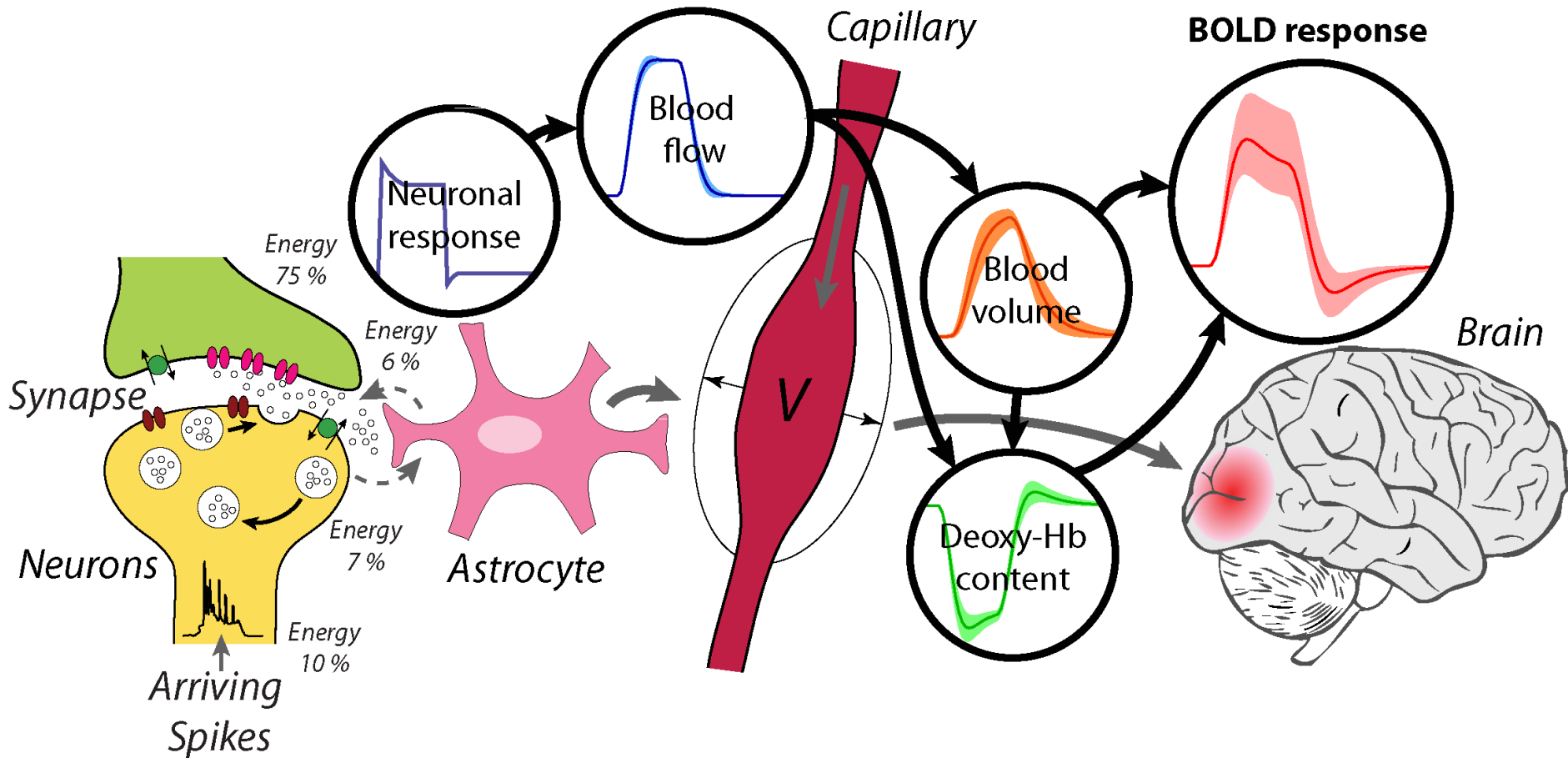
Kâmil Uludağ

Center for Neuroscience Imaging Research
Sungkyunkwan University & IBS, Suwon, Korea

University Health Network
Toronto, Canada



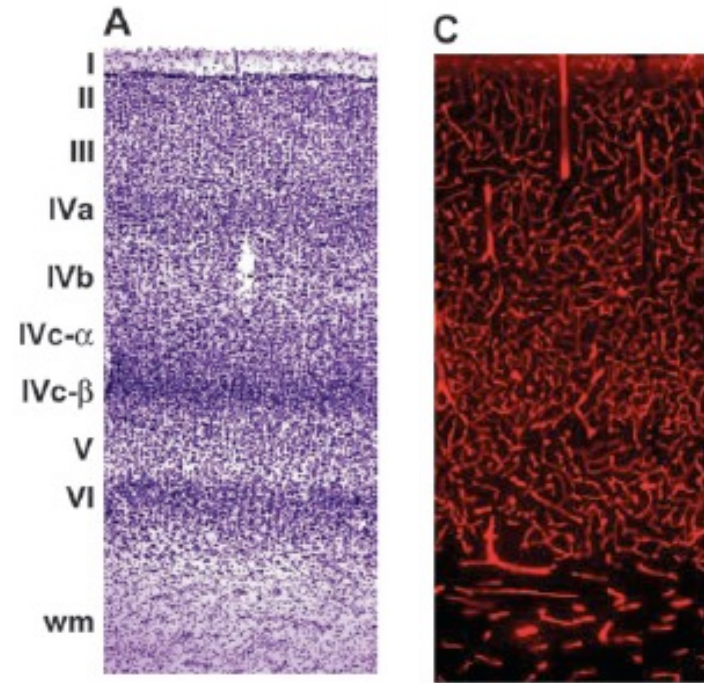
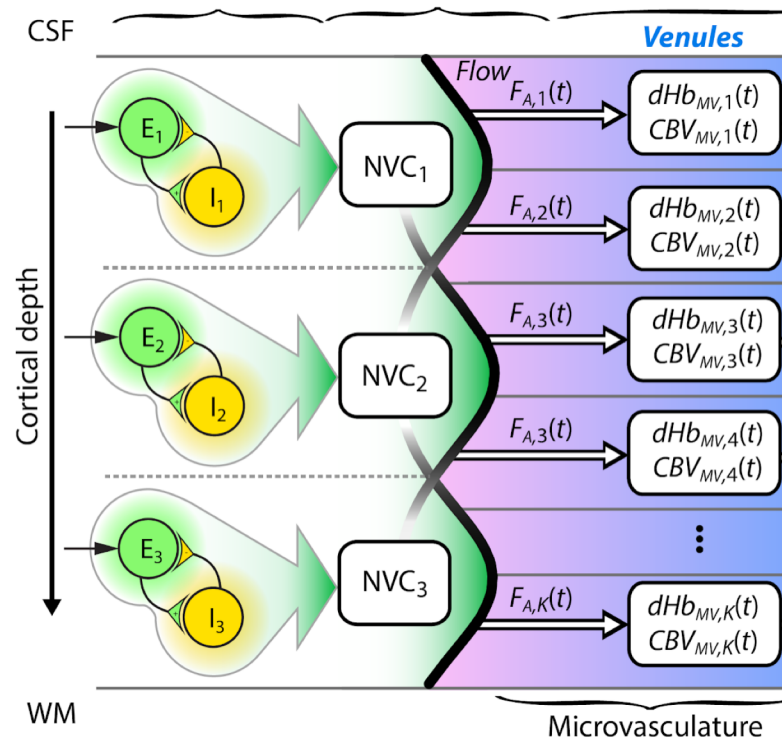
From neuronal response to fMRI data



Friston et al. 2003
Implemented in SPM & TVB

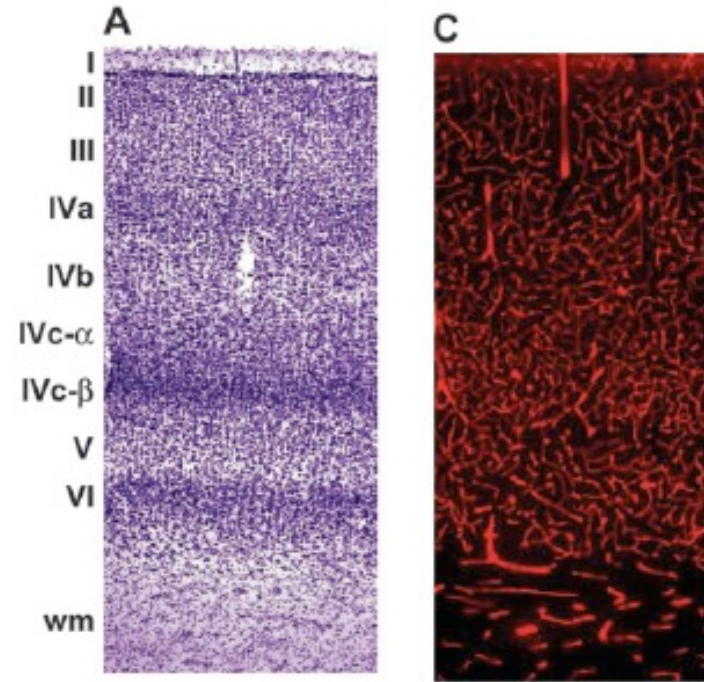
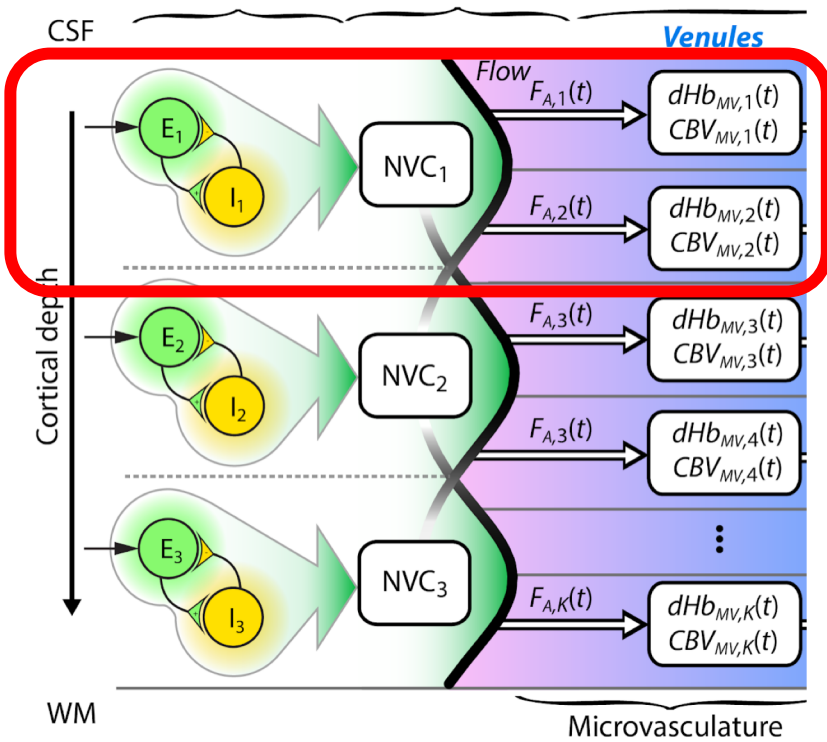
Havlicek et al. 2015, 2017

Dynamic laminar model



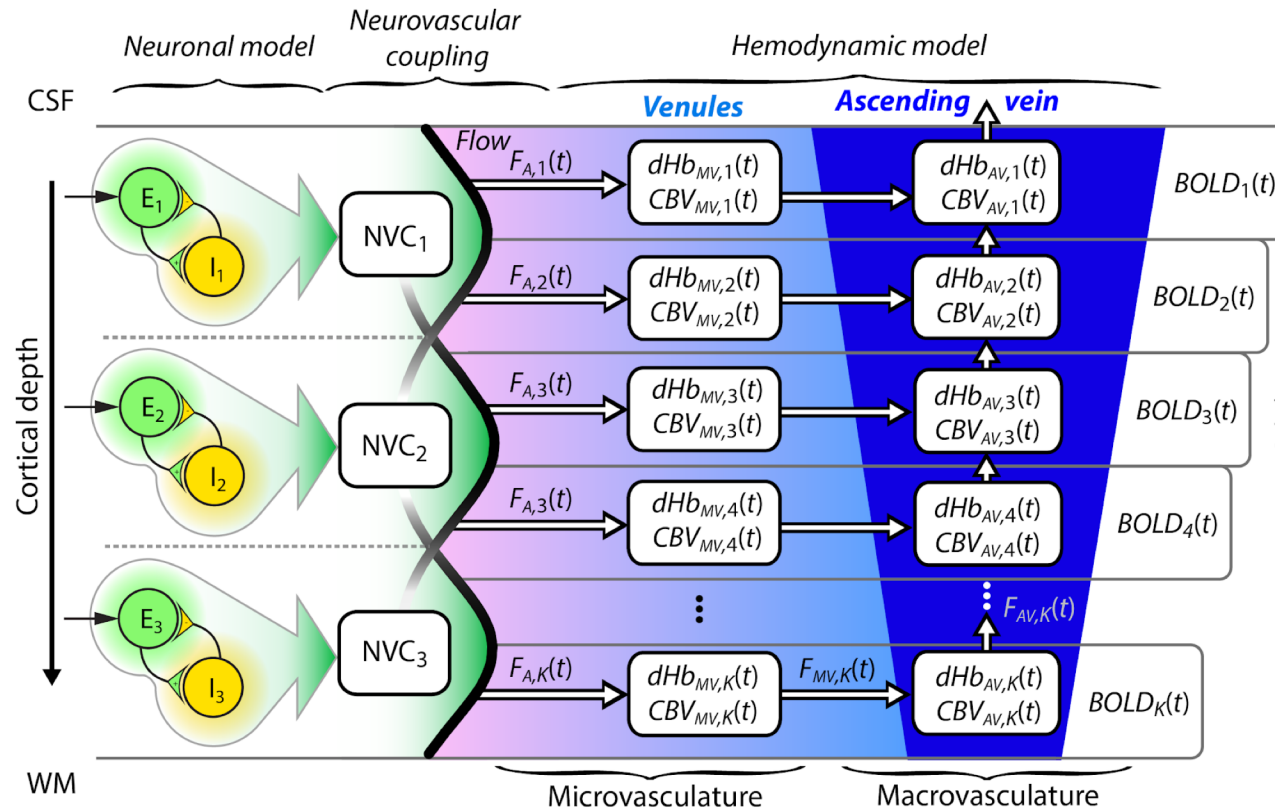
Weber & Logothetis, 2008

Dynamic laminar model



Weber & Logothetis, 2008

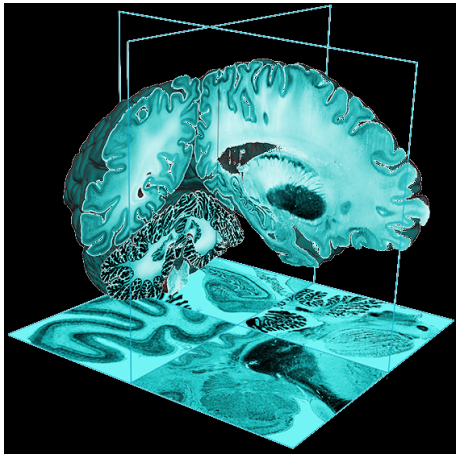
Dynamic laminar model



Havlicek & Uludag, 2020

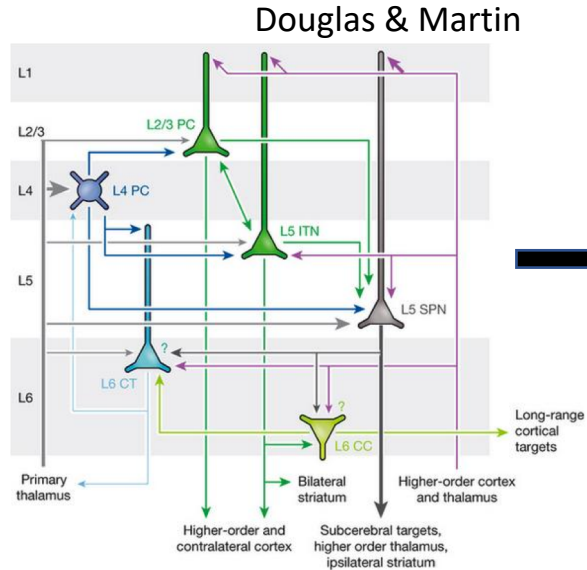
From BigBrain to Laminar fMRI

BigBrain



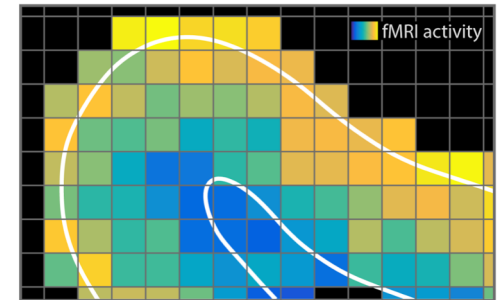
+ Receptor-architecture ...

Regional Microcircuit model



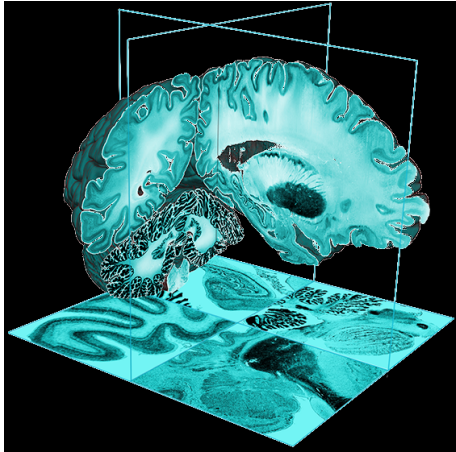
+ vascular parameters
+ layer depth definitions

Laminar fMRI model



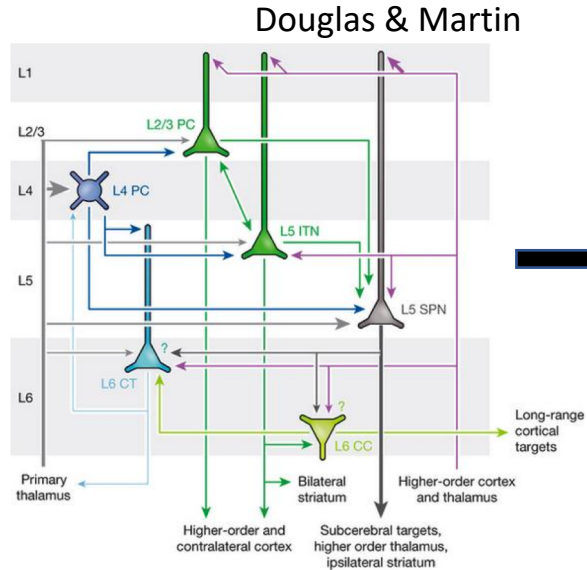
From BigBrain to Laminar fMRI

BigBrain

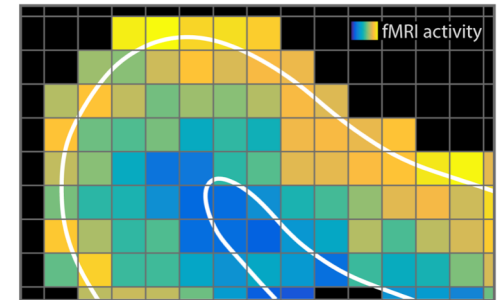


+ Receptor-architecture ...

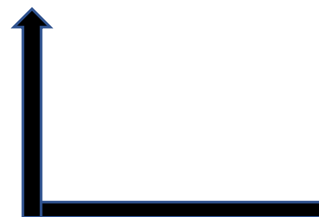
Regional Microcircuit model



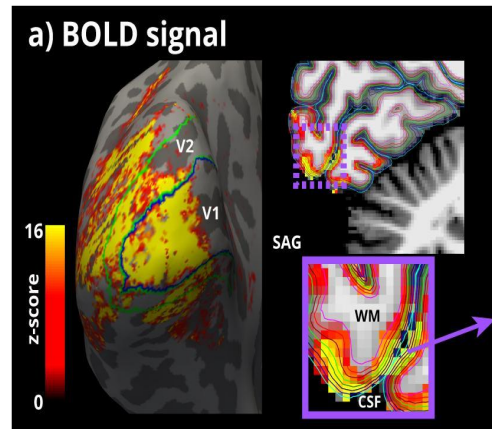
Laminar fMRI model



Laminar fMRI data



Bayesian model inversion



Thank you for your attention!