

Quantitative whole-brain multi-modal fibre and cell mapping in primates



Roxana N. Kooijmans

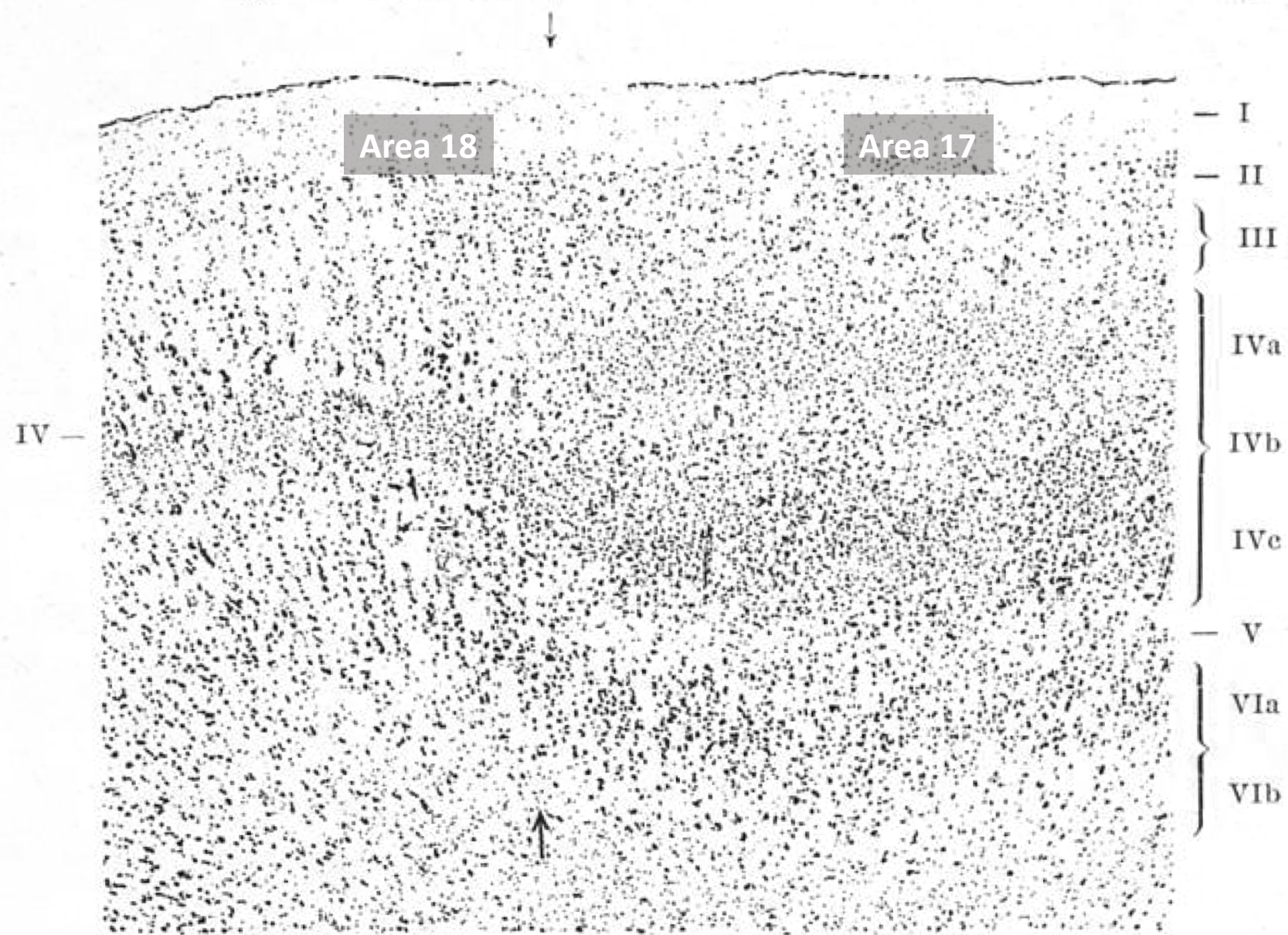
r.kooijmans@nin.knaw.nl

& Markus Axer

m.axer@fz-juelich.de

Cytoarchitectonic map

Nissl

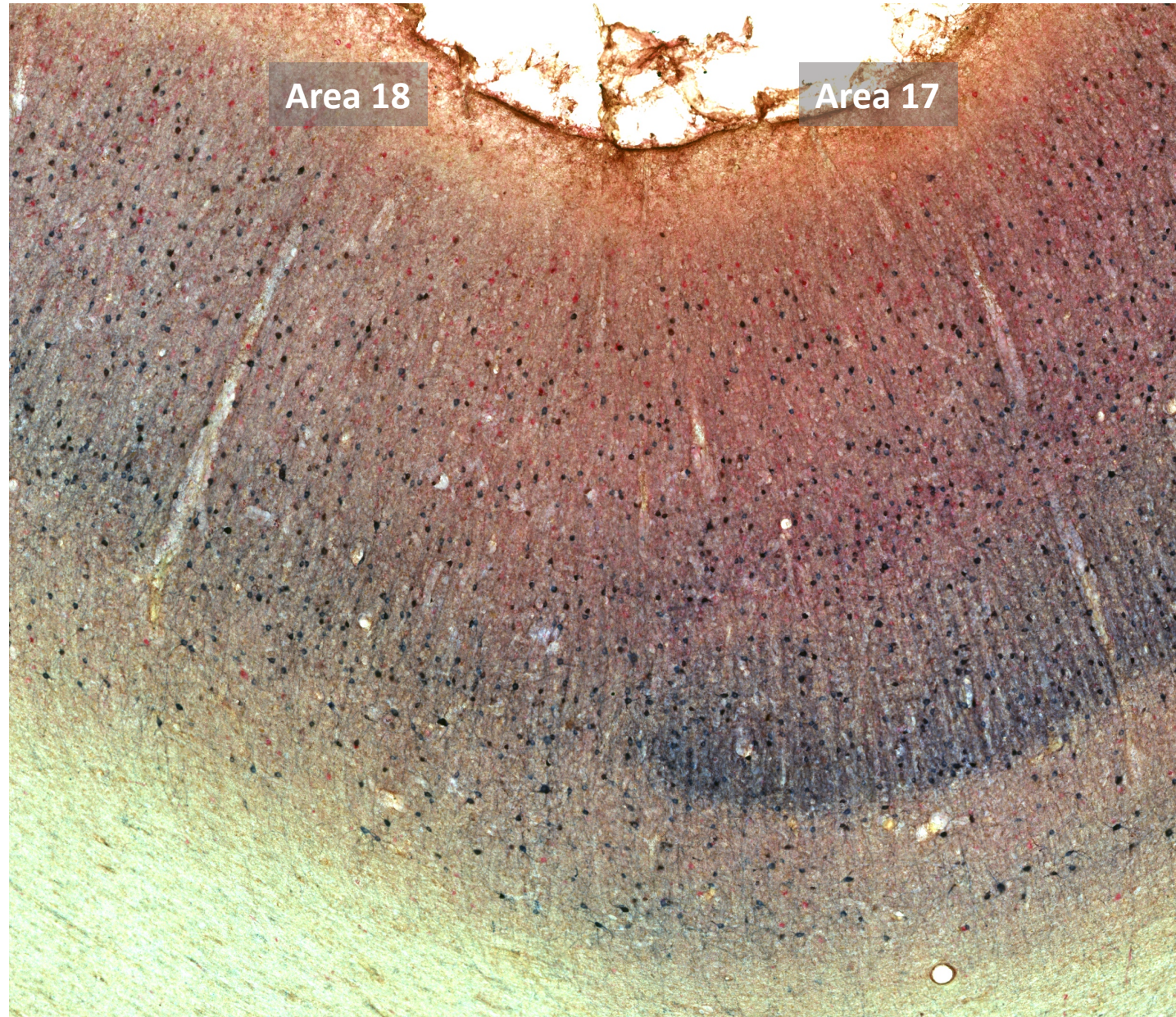


Brodmann, K. (1909)

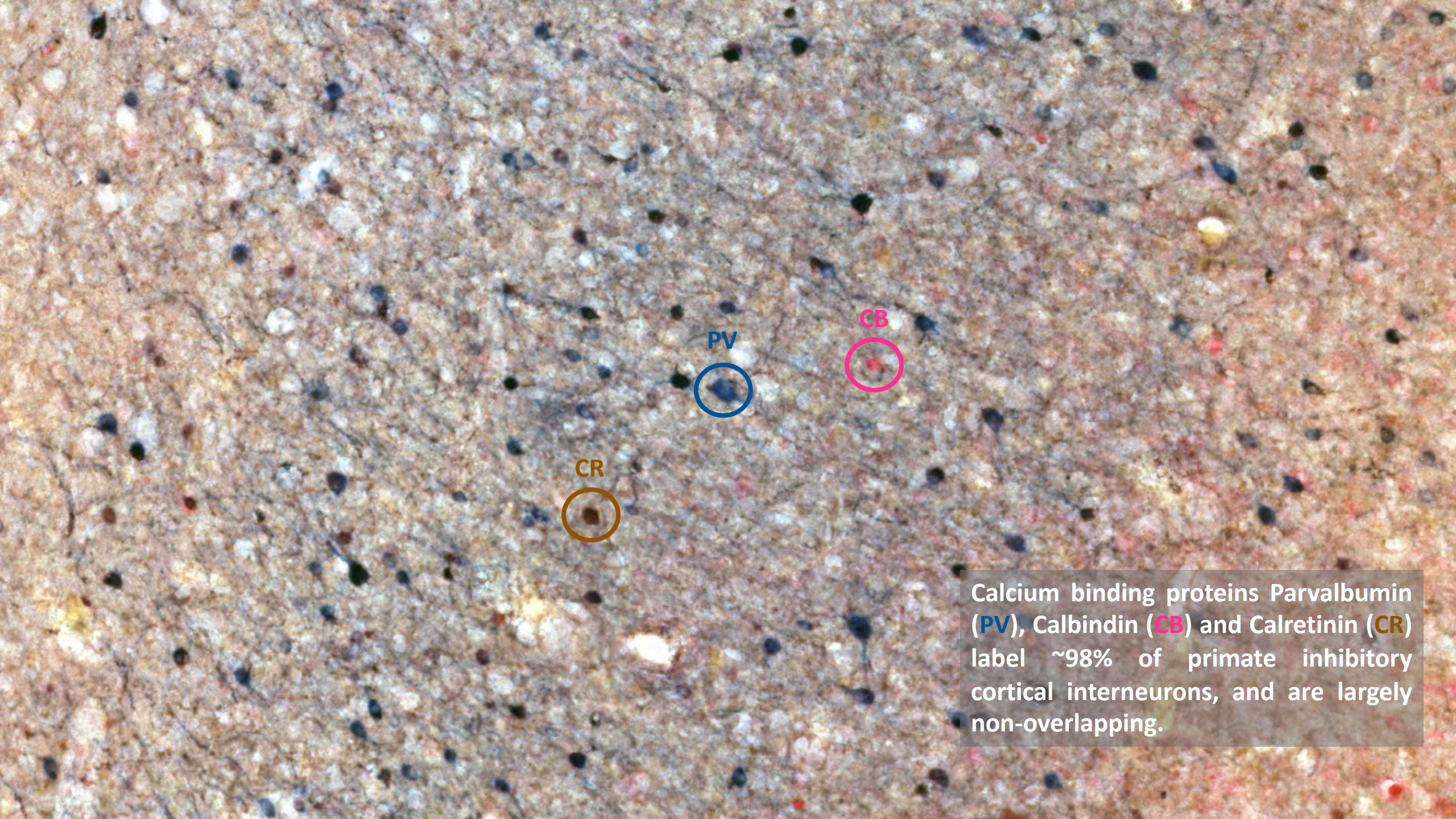
Fig. 12. Erwachsener Mensch. 25 : 1, 10 μ .

Übergangsstelle des Calcarinatypus (\downarrow) wie in Fig. 11. Die Schichten sind die gleichen: rechts die achtschichtige Rinde der Area striata (Feld 17 unserer Hirnkarten), links der sechsschichtige Occipitaltypus der Area occipitalis (Feld 18).

Cell-type specific map
Immunohistochemistry



Kooijmans et. al, in preparation



Calcium binding proteins Parvalbumin (PV), Calbindin (CB) and Calretinin (CR) label ~98% of primate inhibitory cortical interneurons, and are largely non-overlapping.

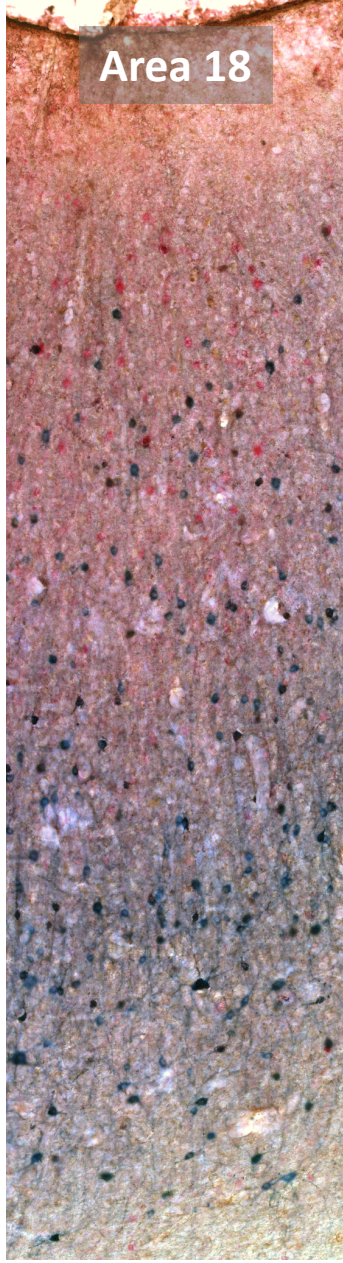
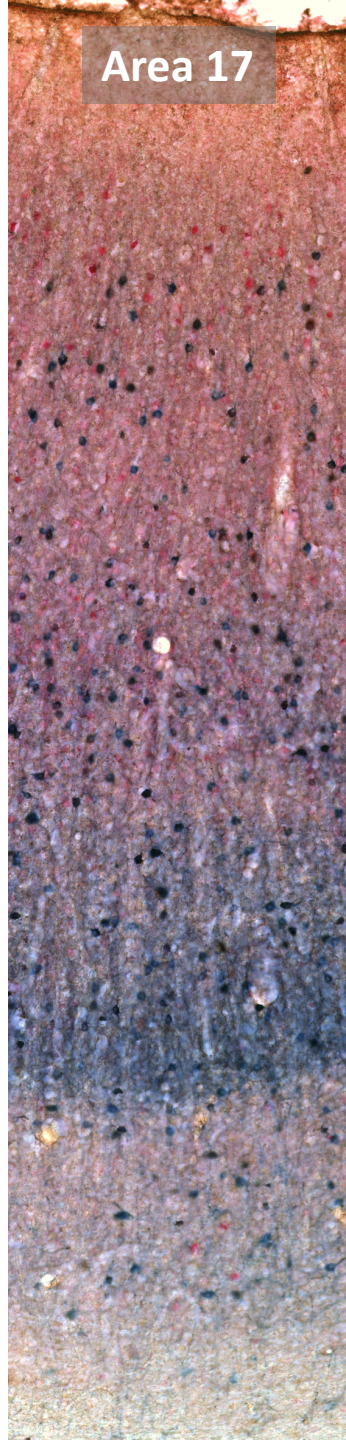


Area 17

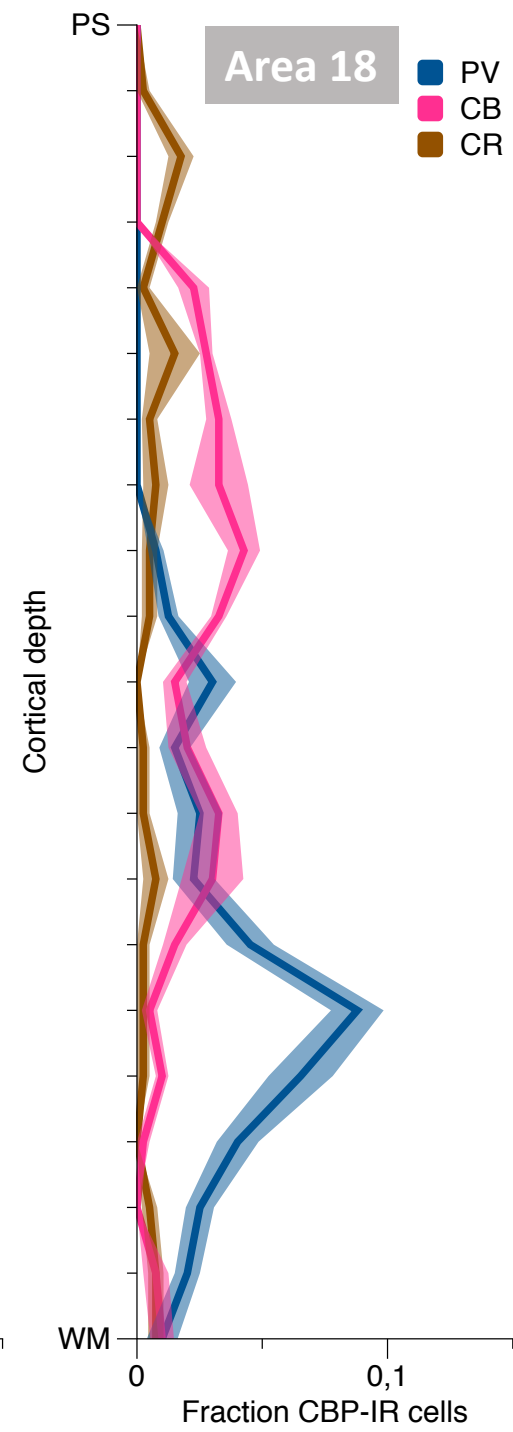
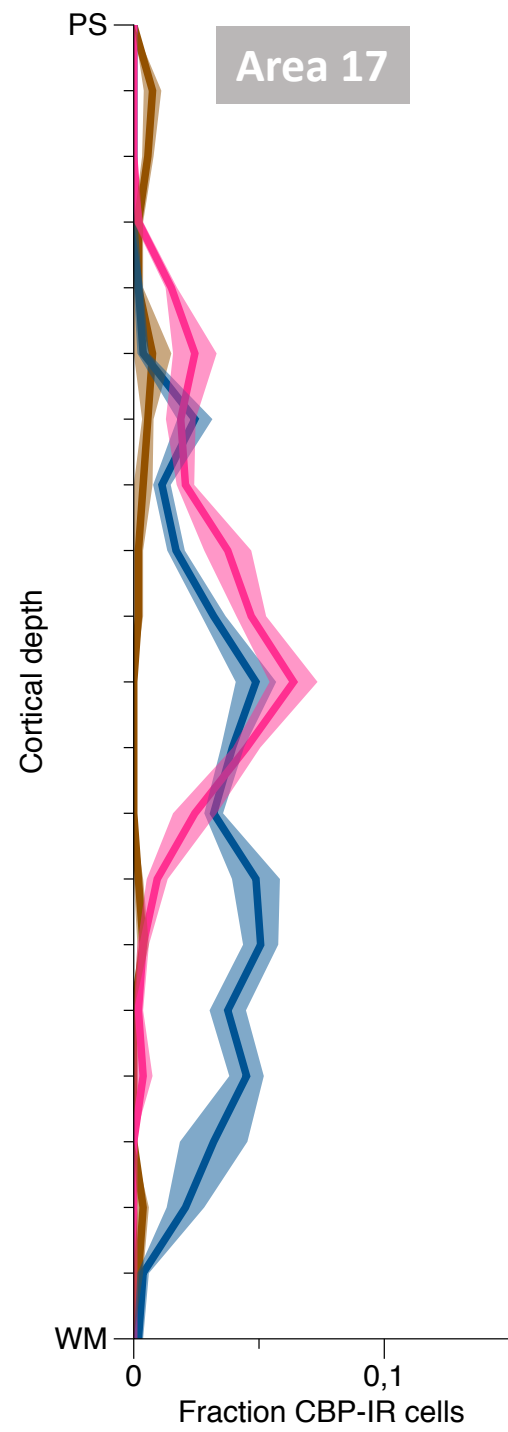
Area 18



Sample regions



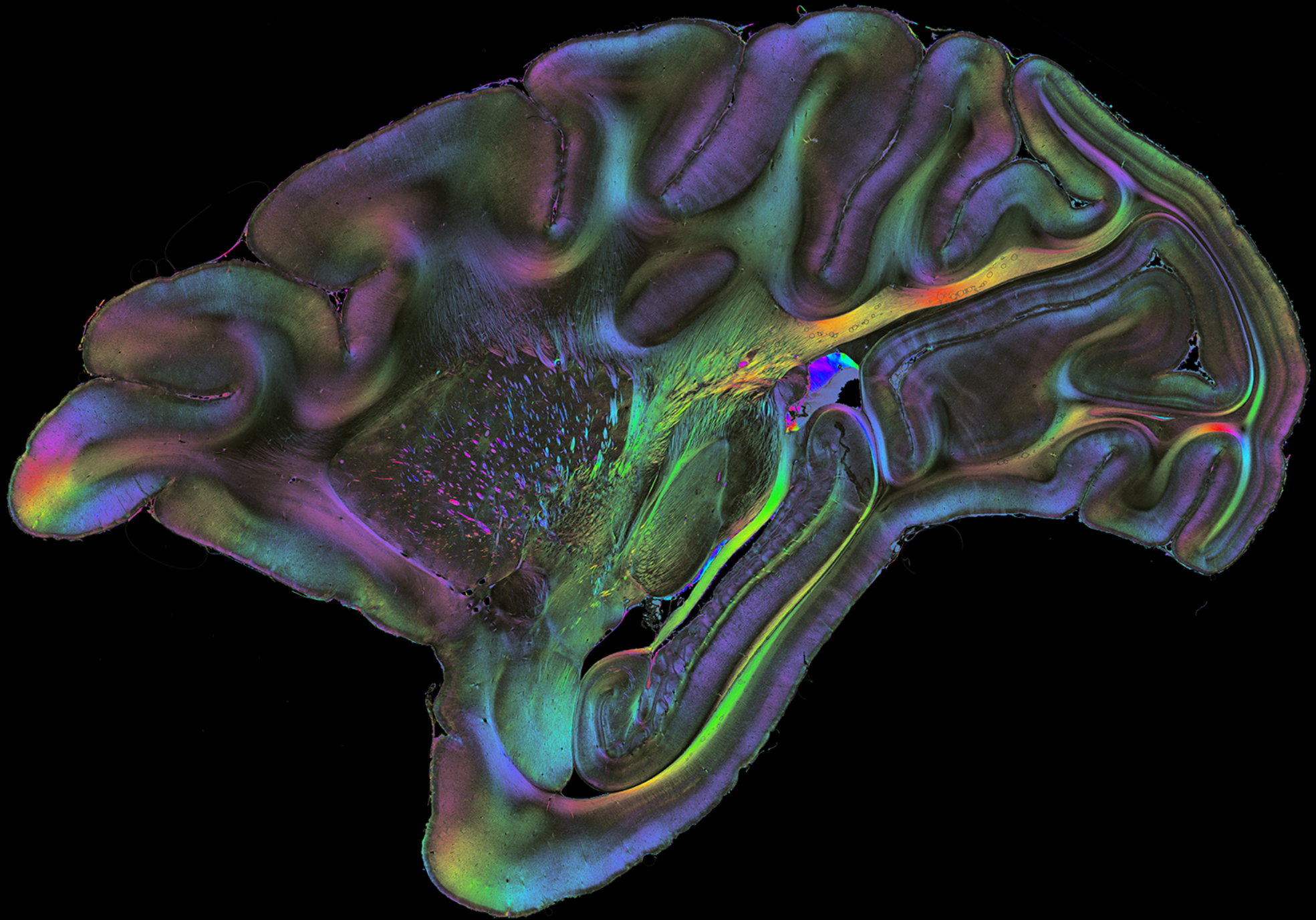
Cell-type specific, cortical depth profiles of cell densities

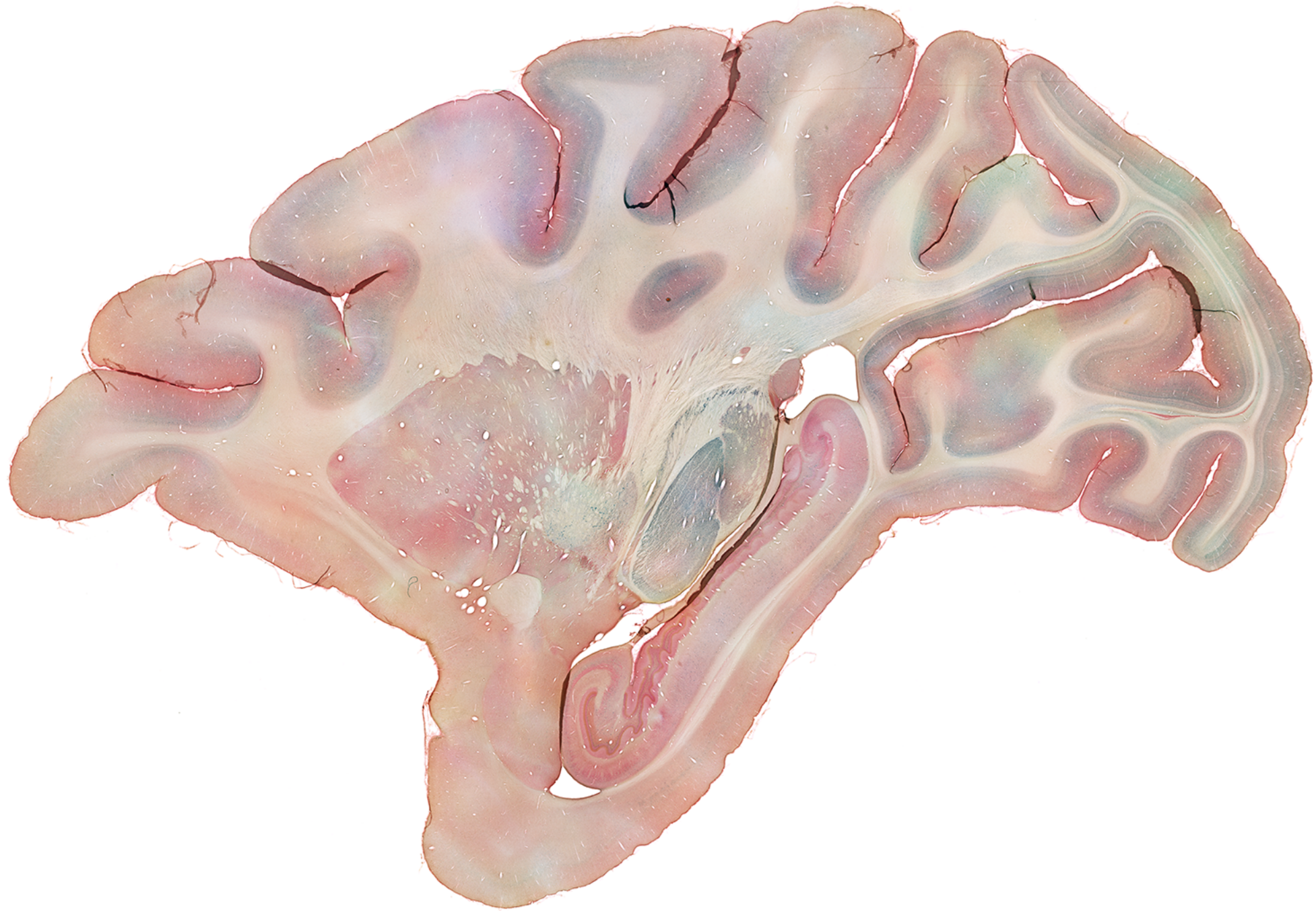


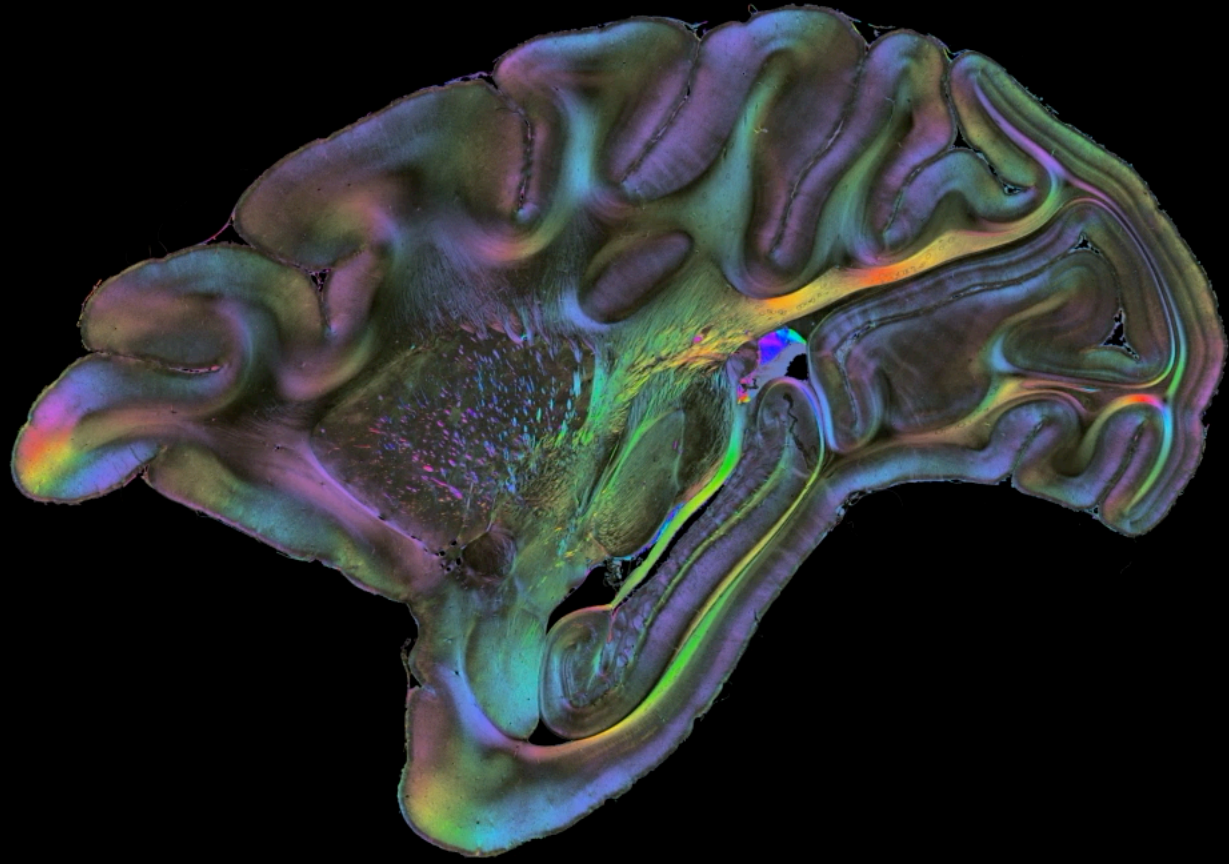
- PV
- CB
- CR

Eric Upschulte (Timo Dickscheid)
Kooijmans et. al, in preparation

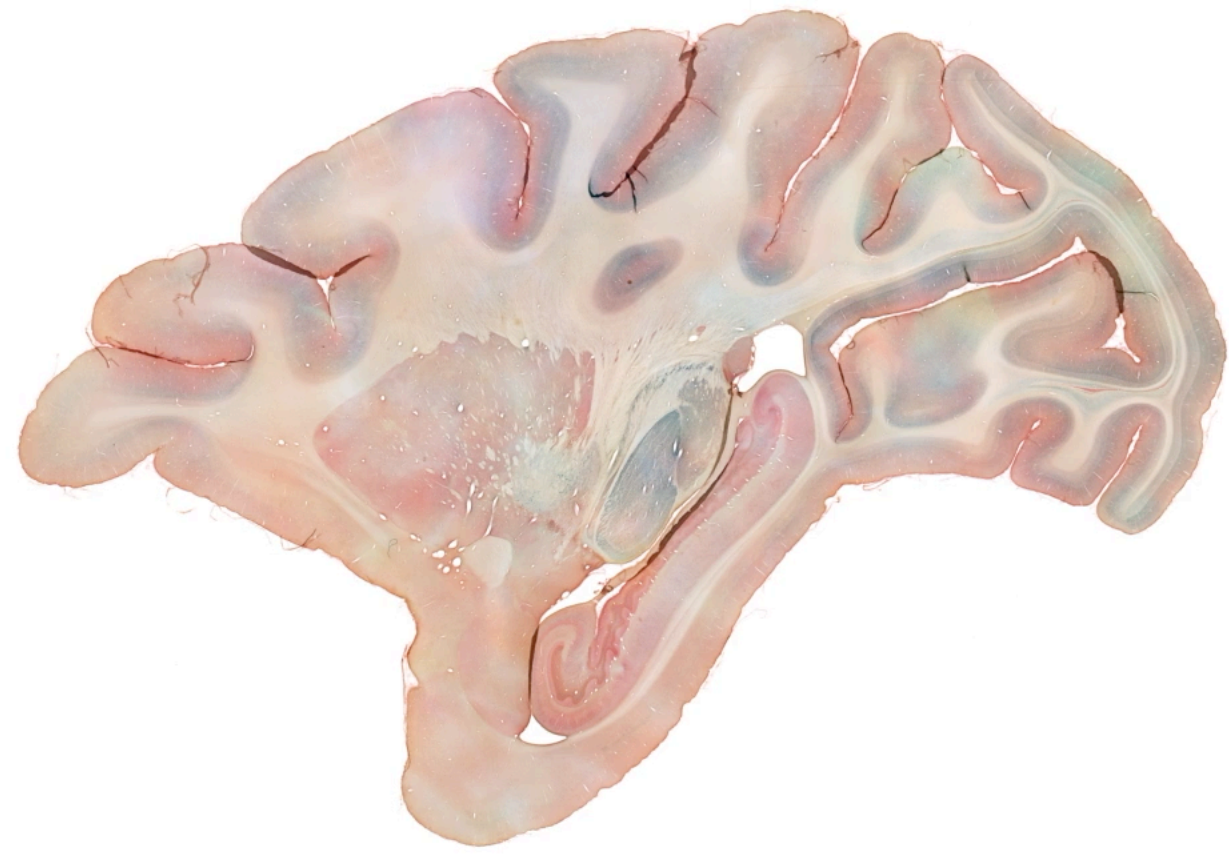
Axer



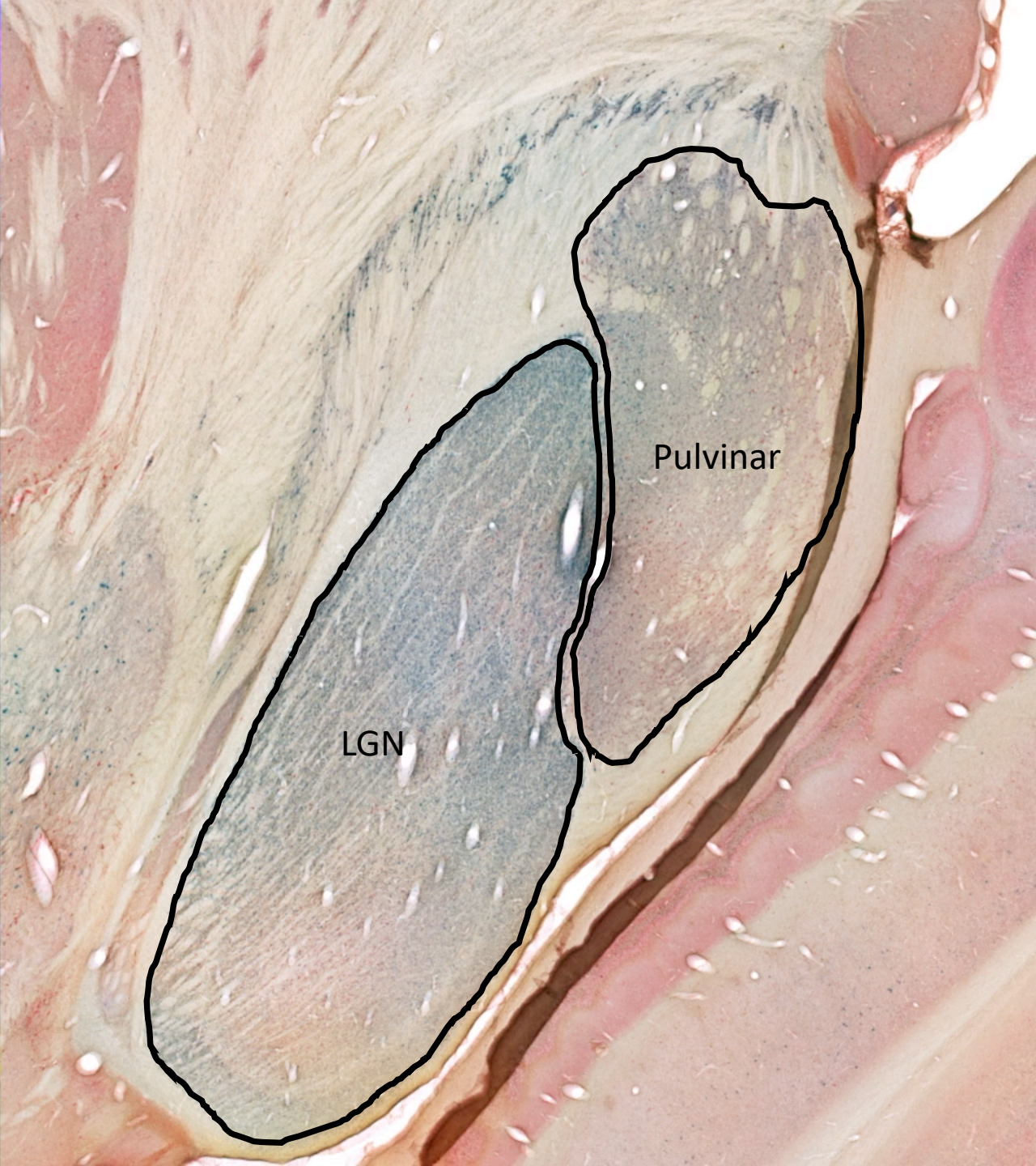
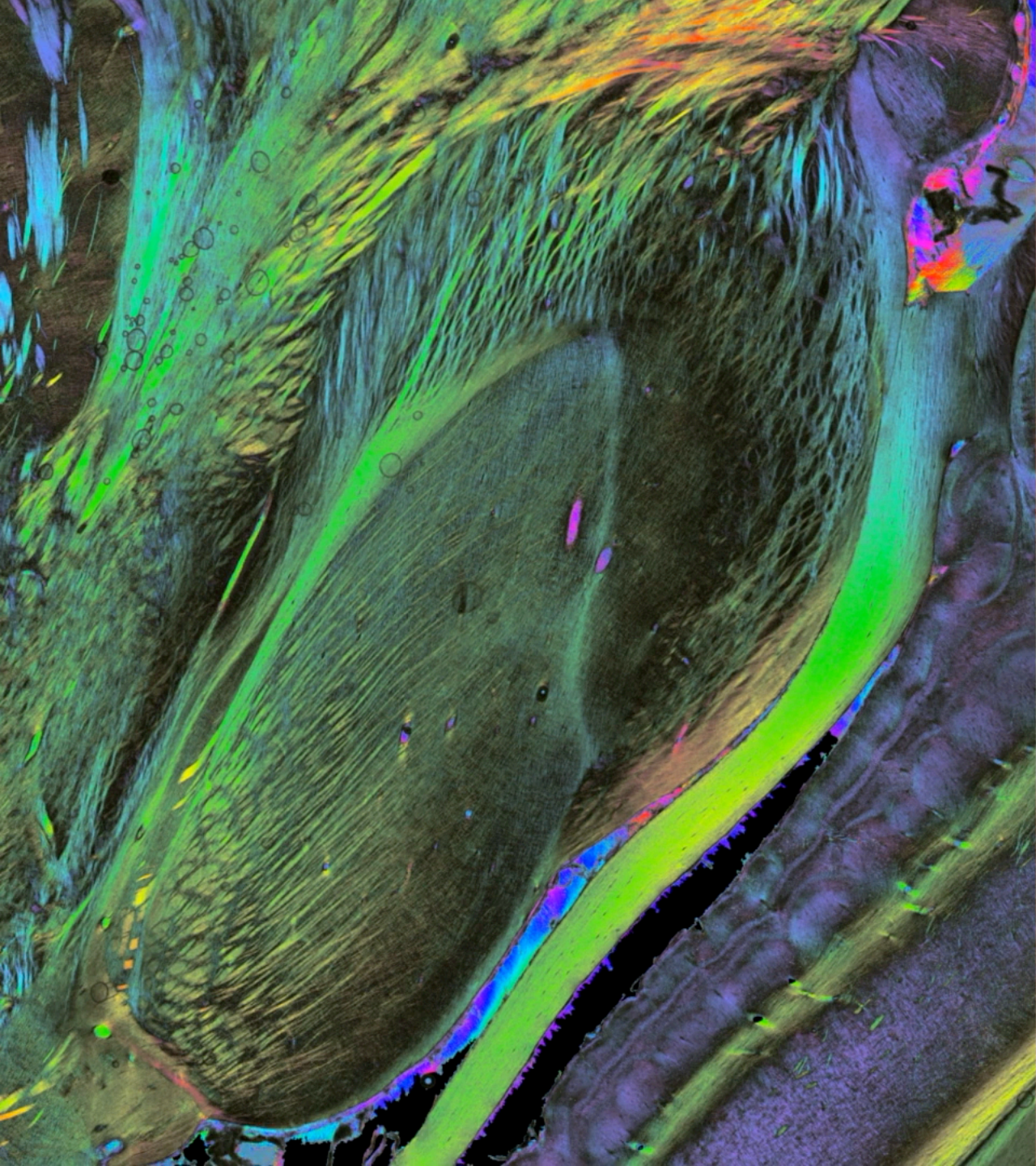


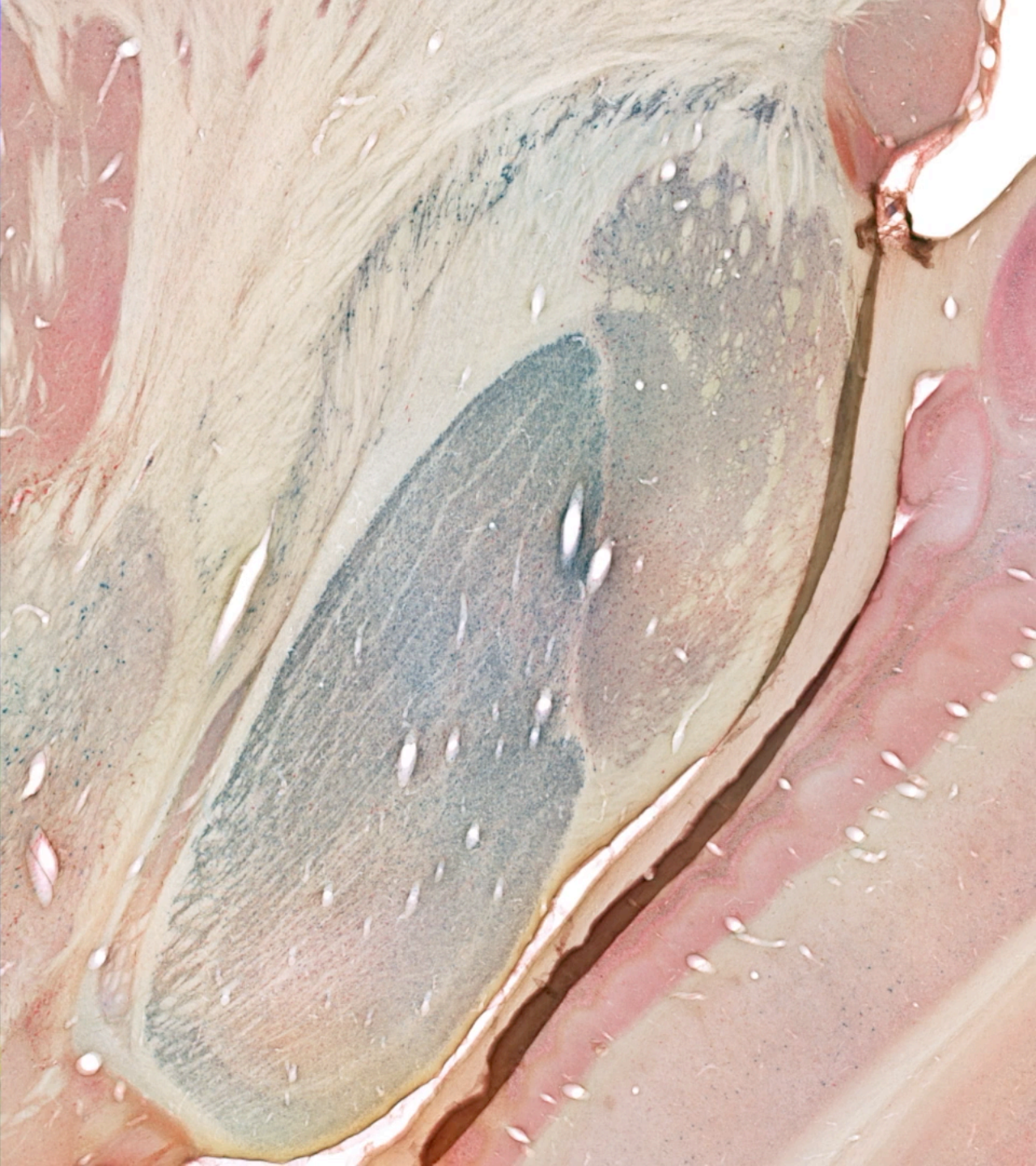
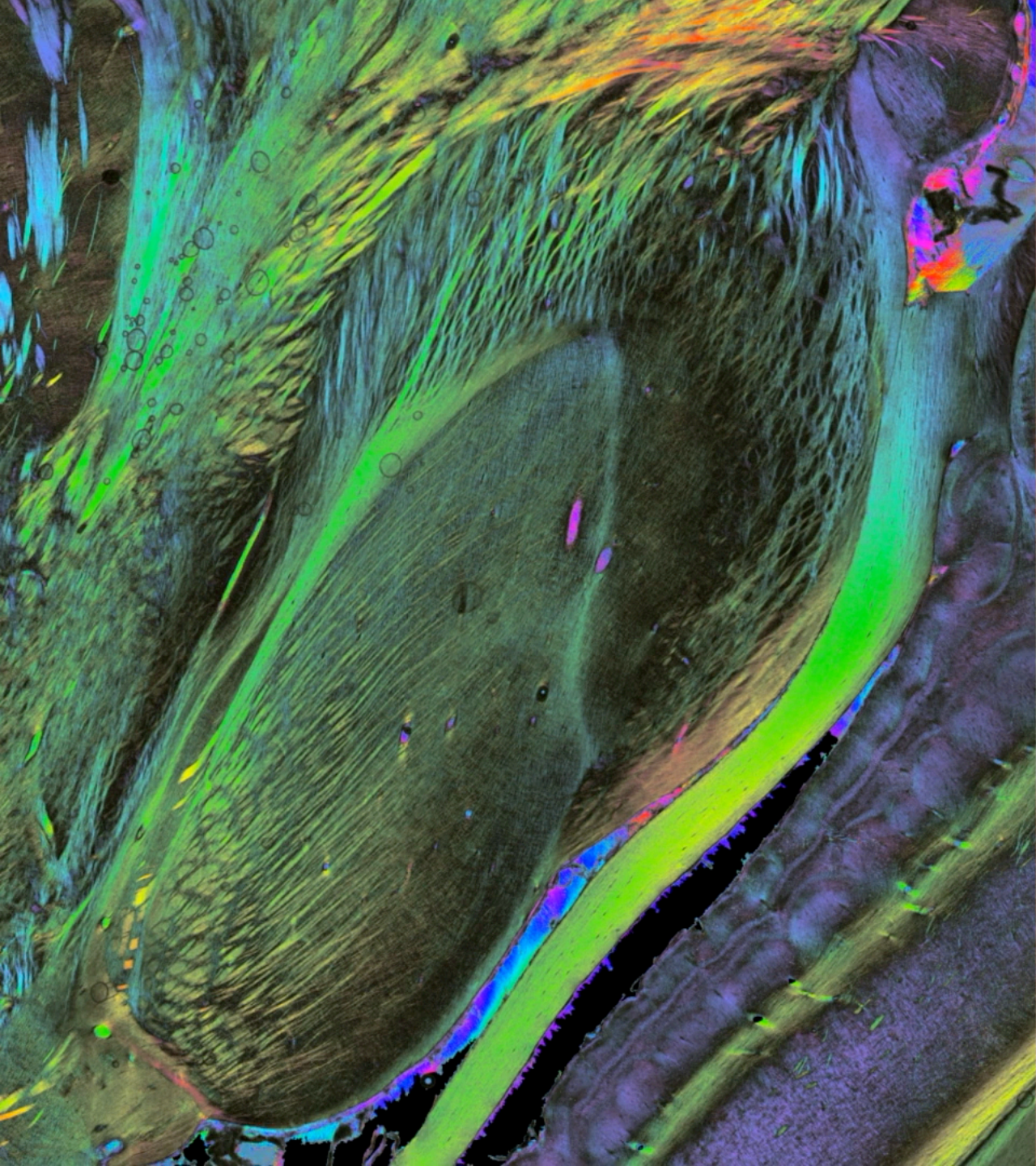


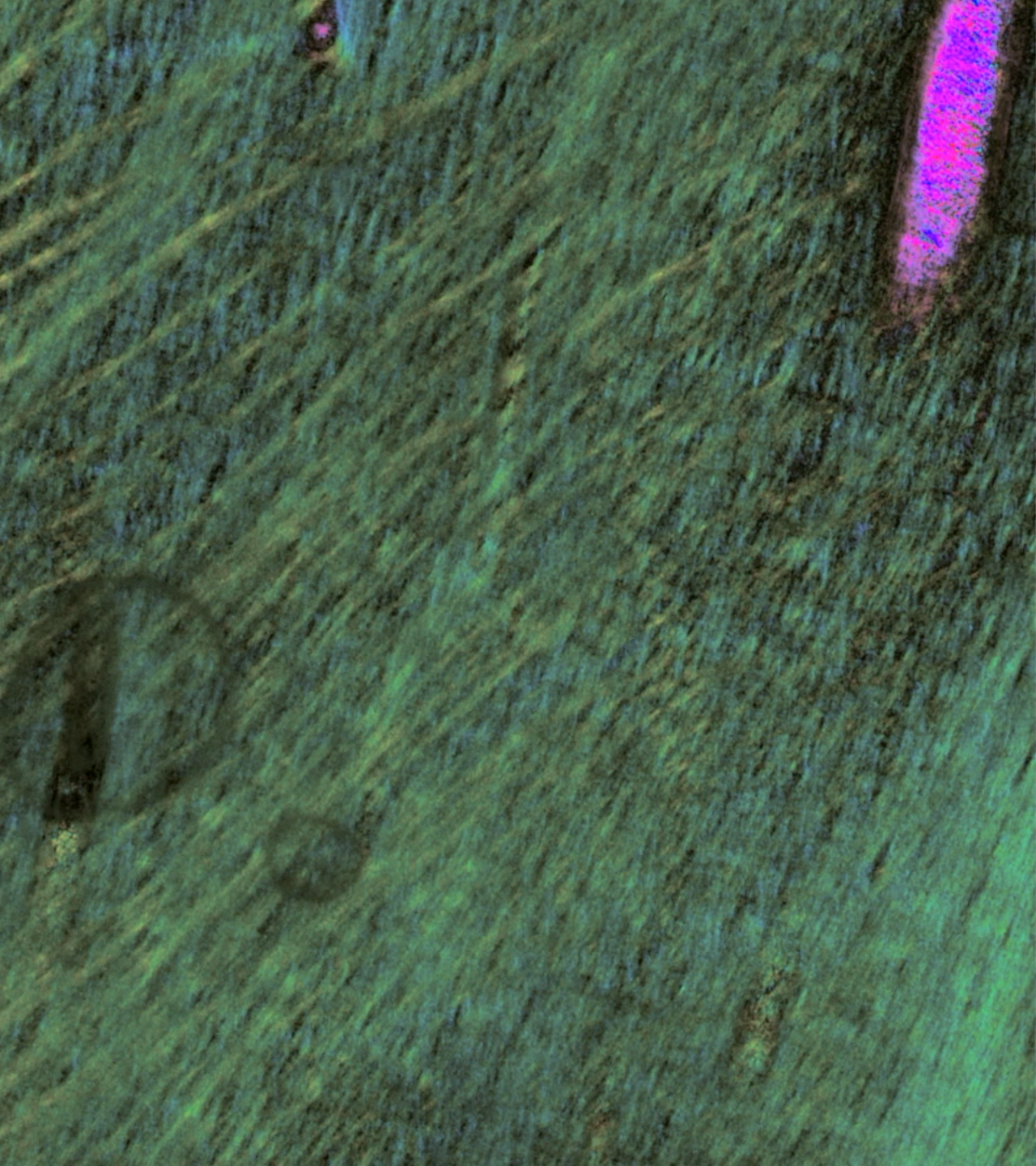
PLI



Immunohistochemistry
Parvalbumin
Calbindin
Calretinin







OPV

OCB

INM 1 – Jülich

Katrin Amunts
Markus Axer
Timo Dickscheid
Karl Zilles

Eric Upschulte
David Grässel
Martin Schober
Philipp Schlömer
Markus Cremer

NIN – Amsterdam

Pieter Roelfsema

NBB – Amsterdam

Inge Huitinga
Michiel Kooreman

UM – Maastricht

Alard Roebroek

