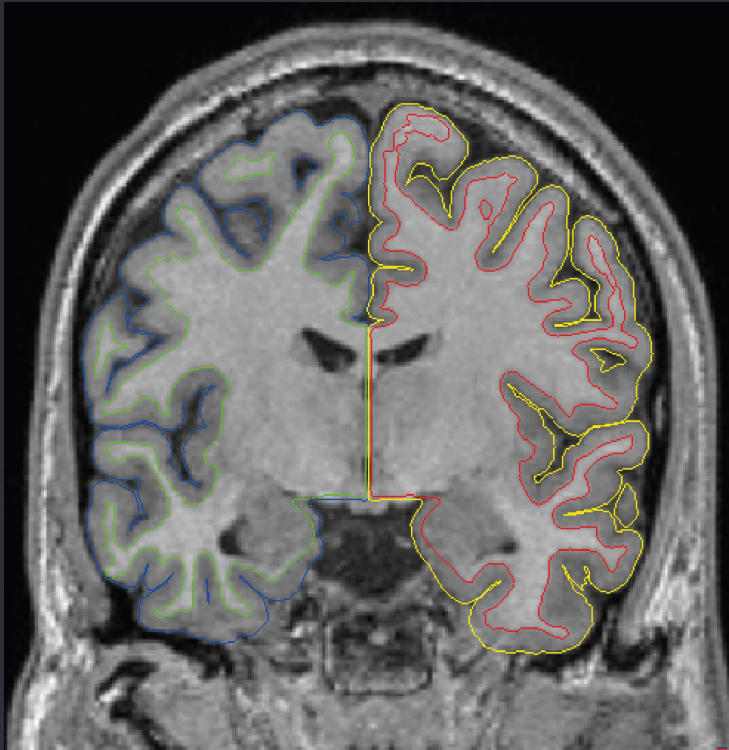


● BigBrain atlas of cortical layers:
Linking cortical microstructure to
in vivo measures of cortical structure.

Konrad Wagstyl MBPhD

 @KonradWagstyl

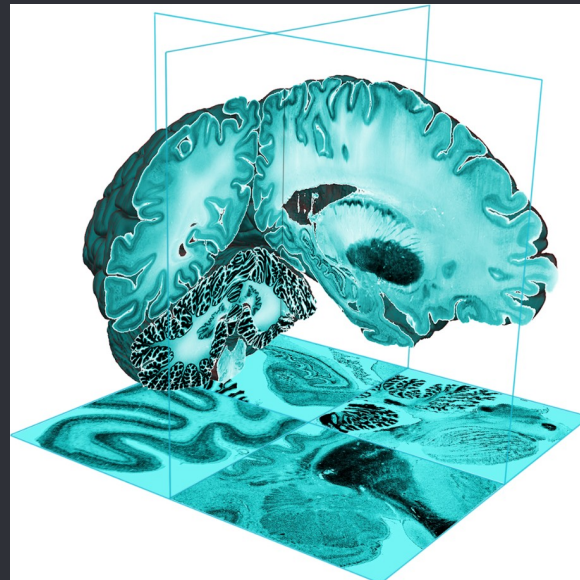
Bridging MRI and histology



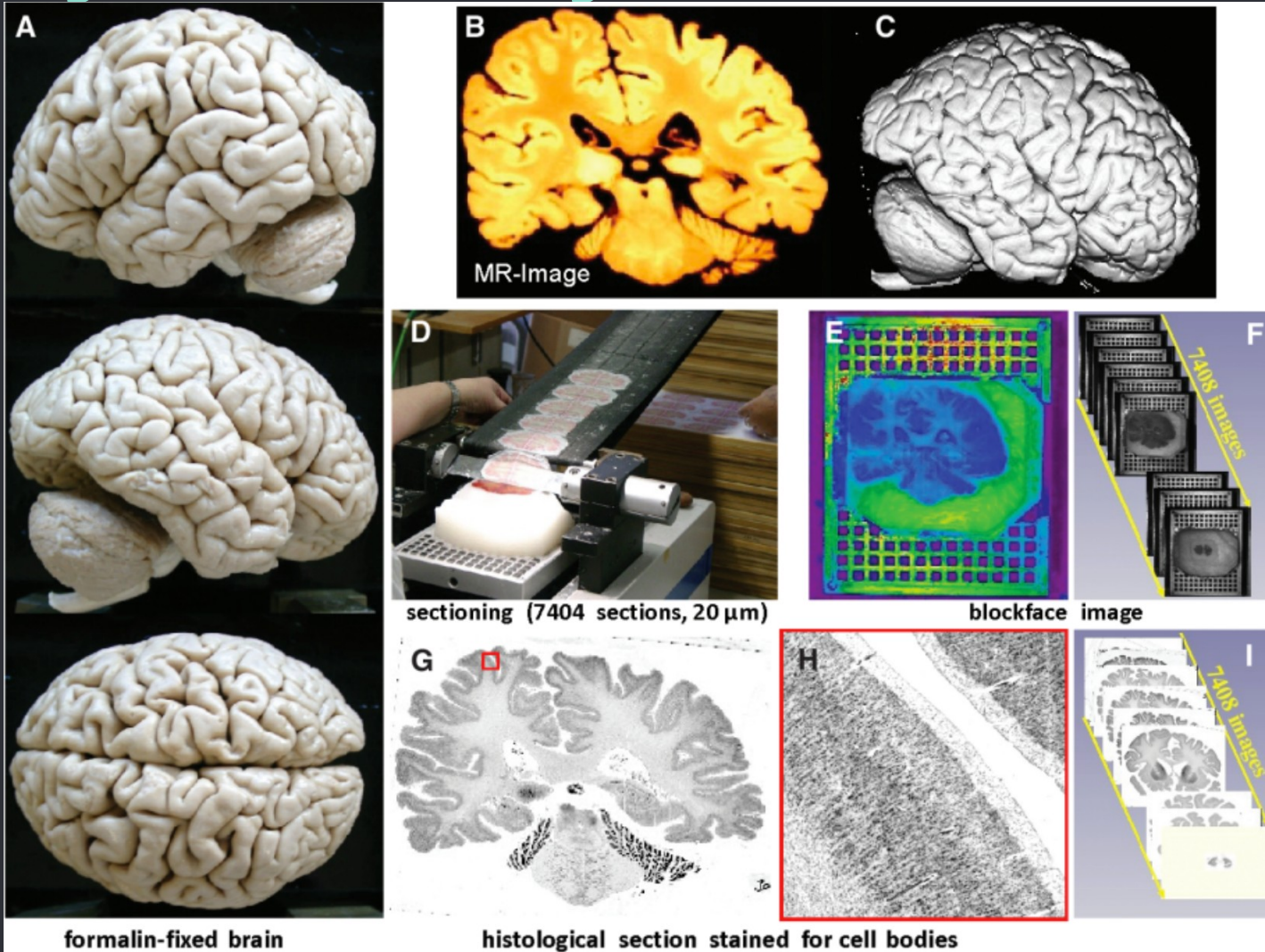
- *in vivo* and large N.
- Low resolution, ambiguous signal.
- High resolution, staining/labelling
- 2D, small N, limited samples, manual

● OUTLINE

- Cortical intensity profiles of laminar structure
- Automated segmentation of cortical layers
- Atlas of cortical layers



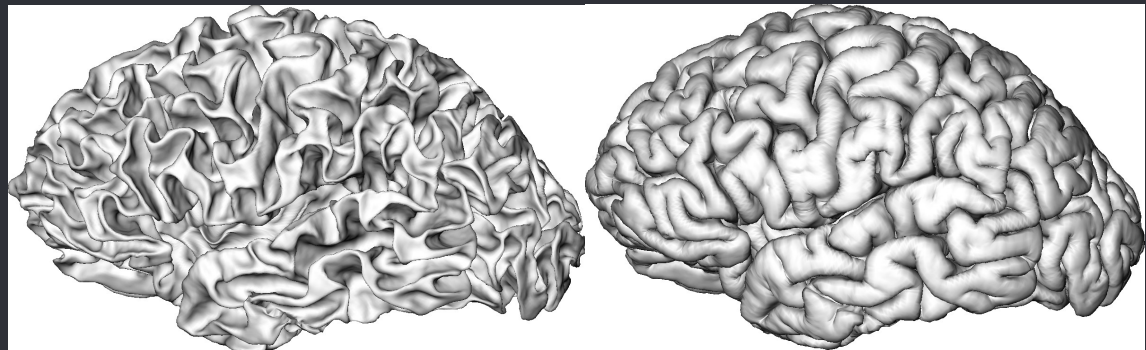
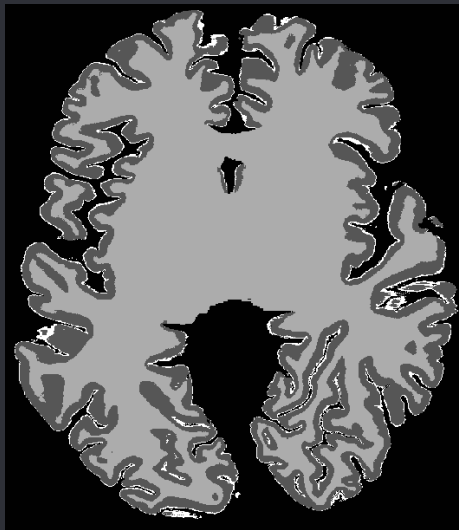
● BigBrain: An Ultrahigh-Resolution 3D Human Brain



● Cortical Surface Extraction

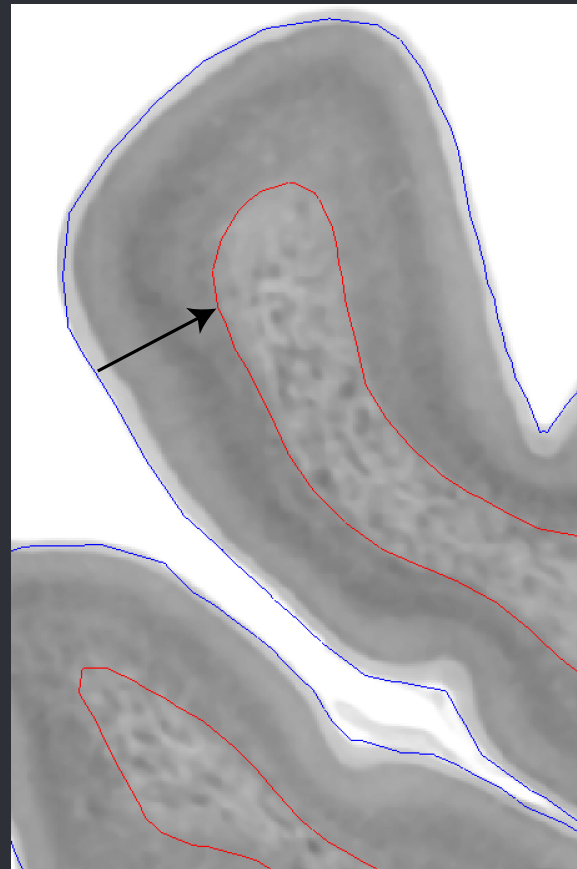
Modified from CIVET:

- Tissue classification
- Extract white matter surface using marching-cubes algorithm
- Expand white surface to pial boundary using CLASP (CIVET)

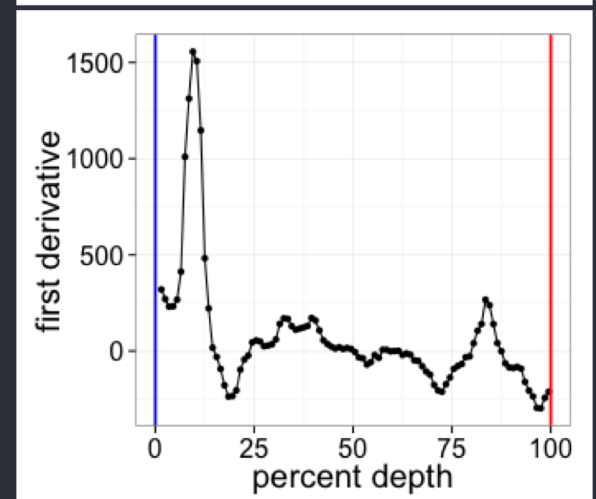
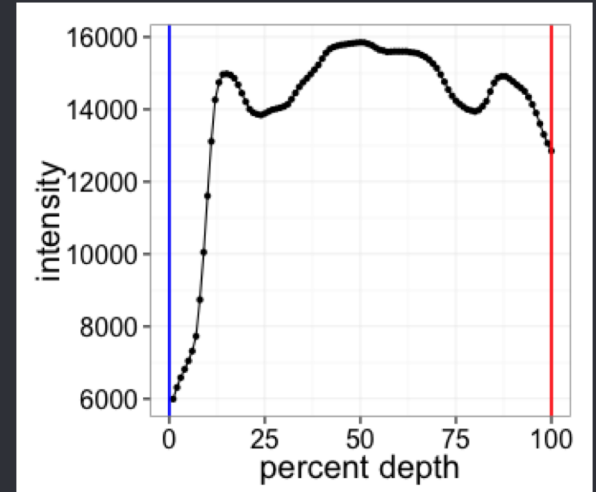
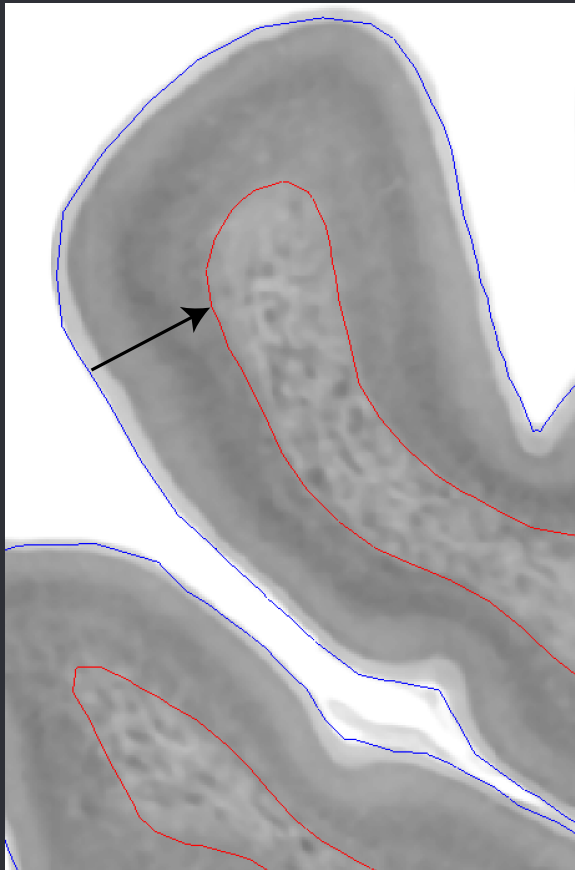


● Intensity profiles

- Intensity samples at 100 points between pial and white matter surfaces
- Create intensity profile for each vertex on the surface

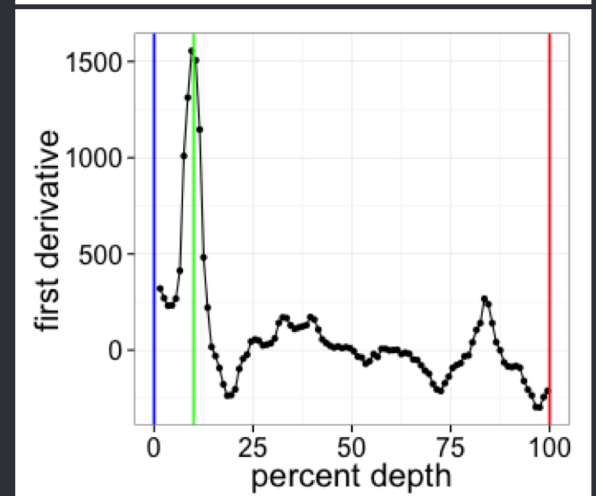
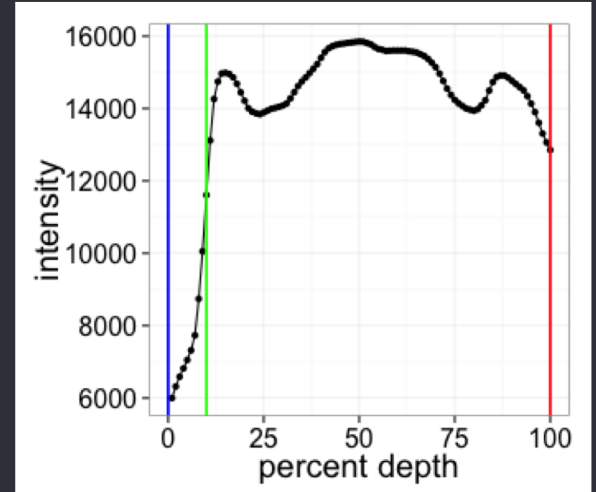
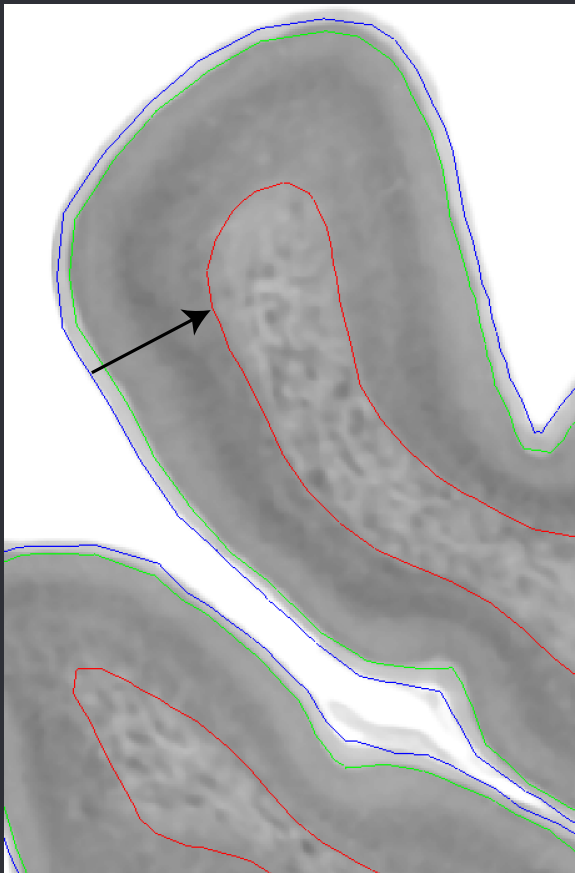


Finding layers



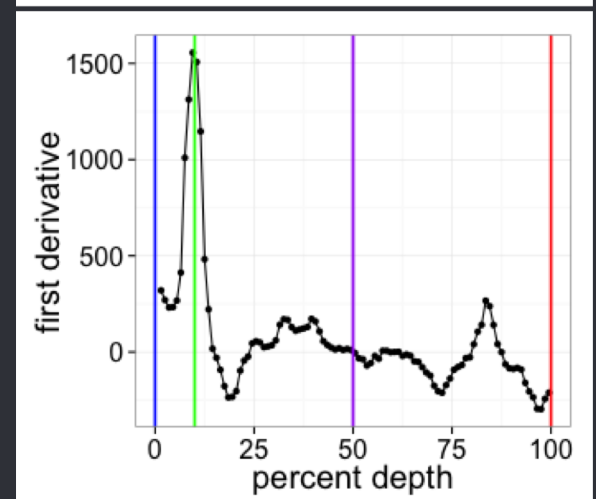
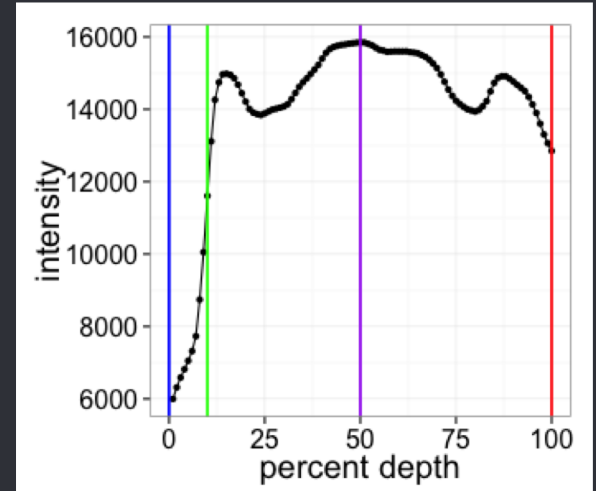
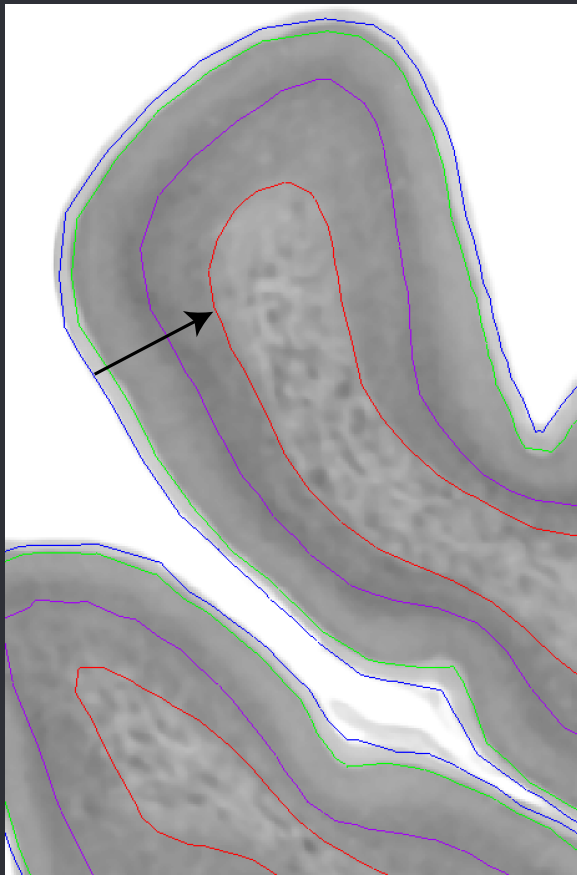
Pial - blue, White matter - red

- Finding layers from profiles



Pial - blue, White matter - red

- Finding layers from profiles



Pial - blue, White matter - red

Cortical layers in 3D

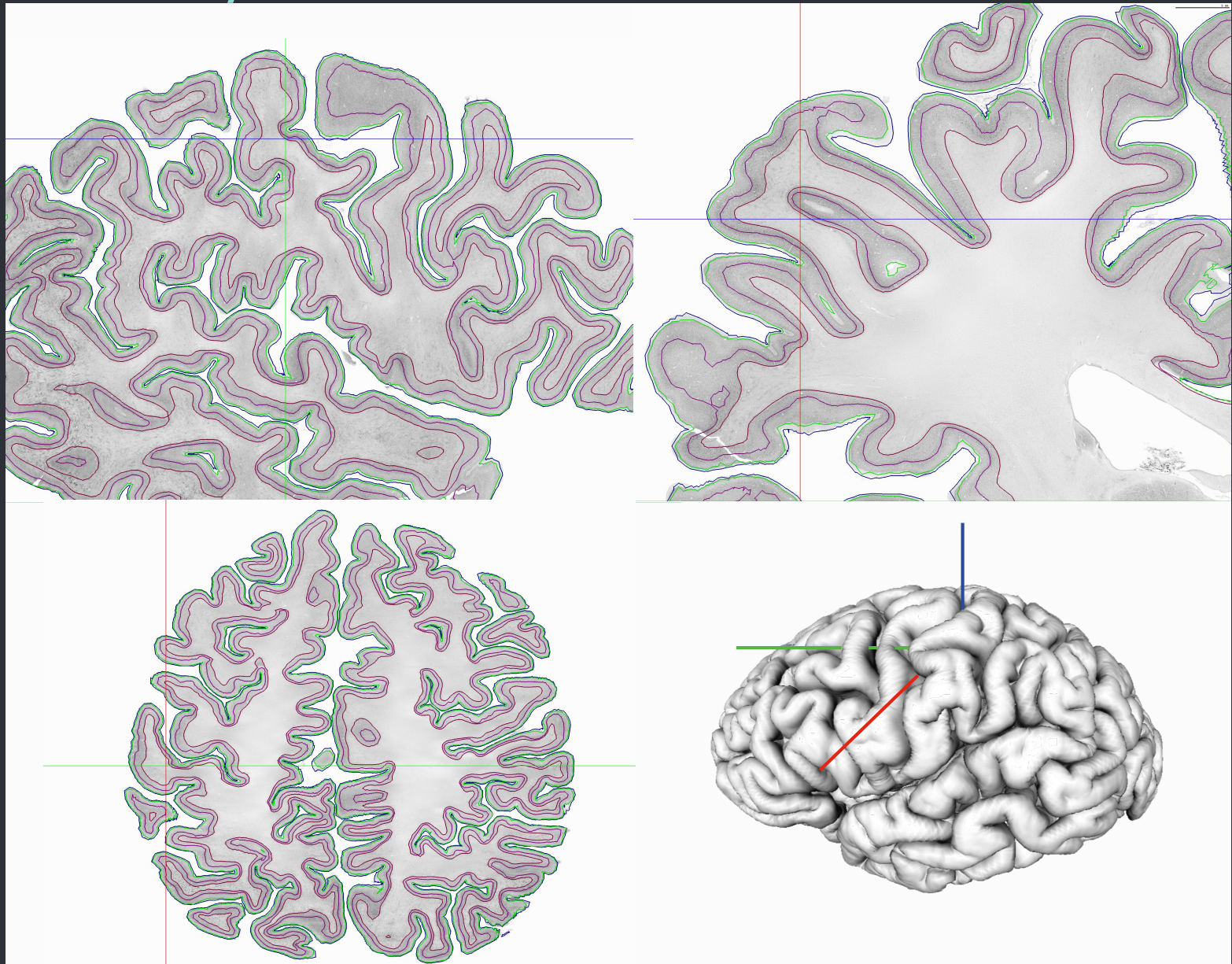


Figure: Wagstyl et al., Cerebral Cortex, 2018

Layer depths predicted by curvature

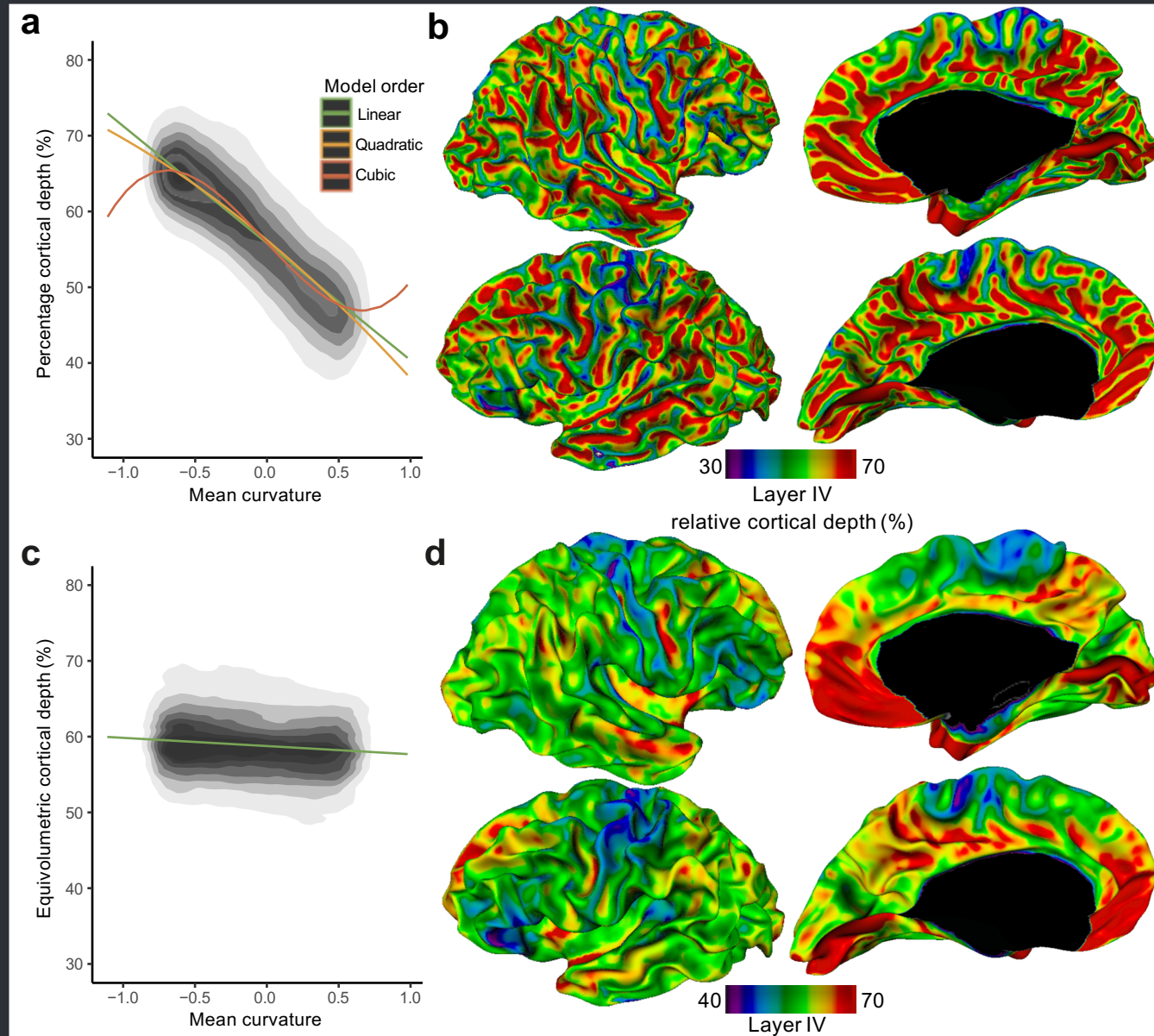
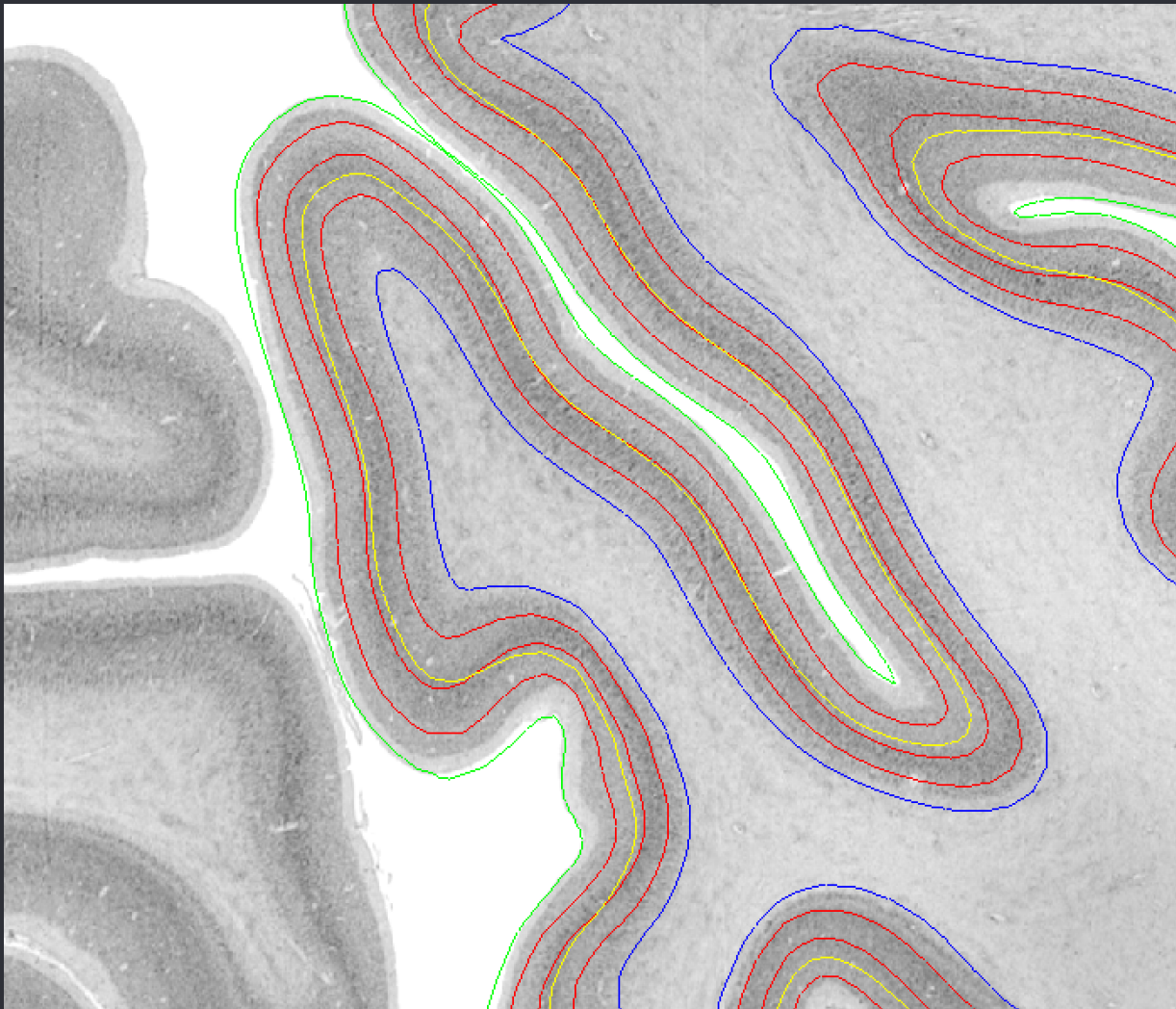


Figure: Wagstyl et al., Cerebral Cortex, 2018

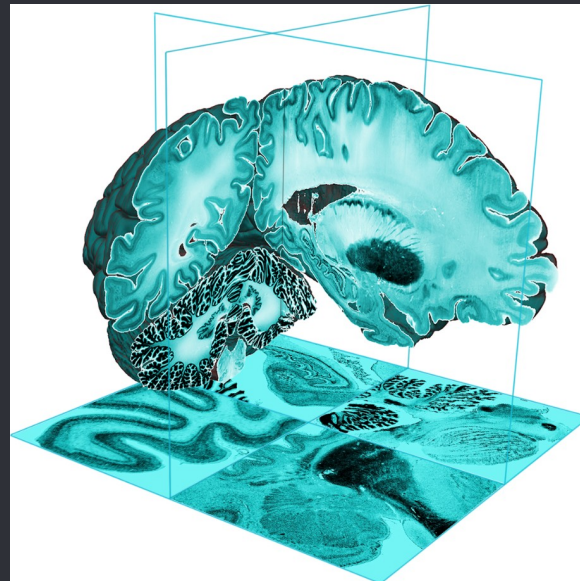
Equivolumetric surfaces

- Surface-based equivolume implementation of Waehnert et al., 2014
- Compatible with Freesurfer & CIVET.
- https://github.com/kwagstyl/surface_tools



● OUTLINE

- Cortical profiles of laminar intensity
- Automated segmentation of cortical layers
- Atlas of cortical layers



Deep learning - convolutional networks

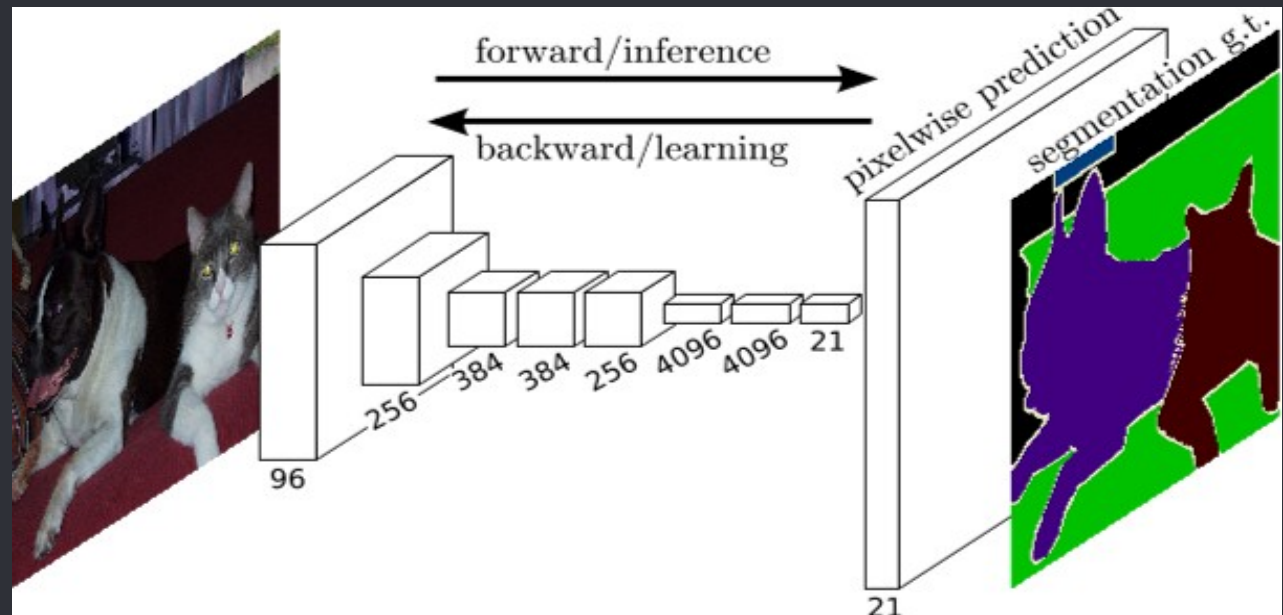
- Variable cytoarchitecture and laminar features

Deep learning:

Learn filters for useful features

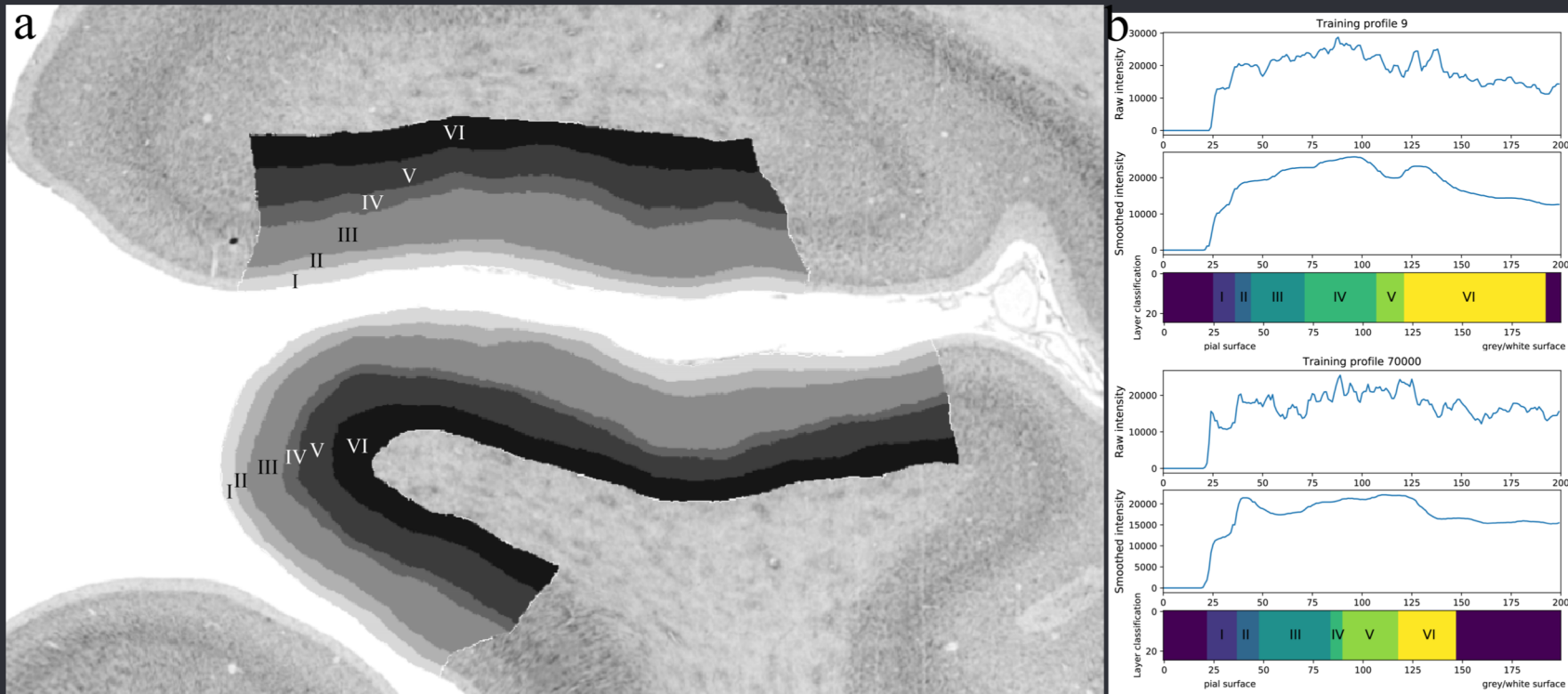
BUT

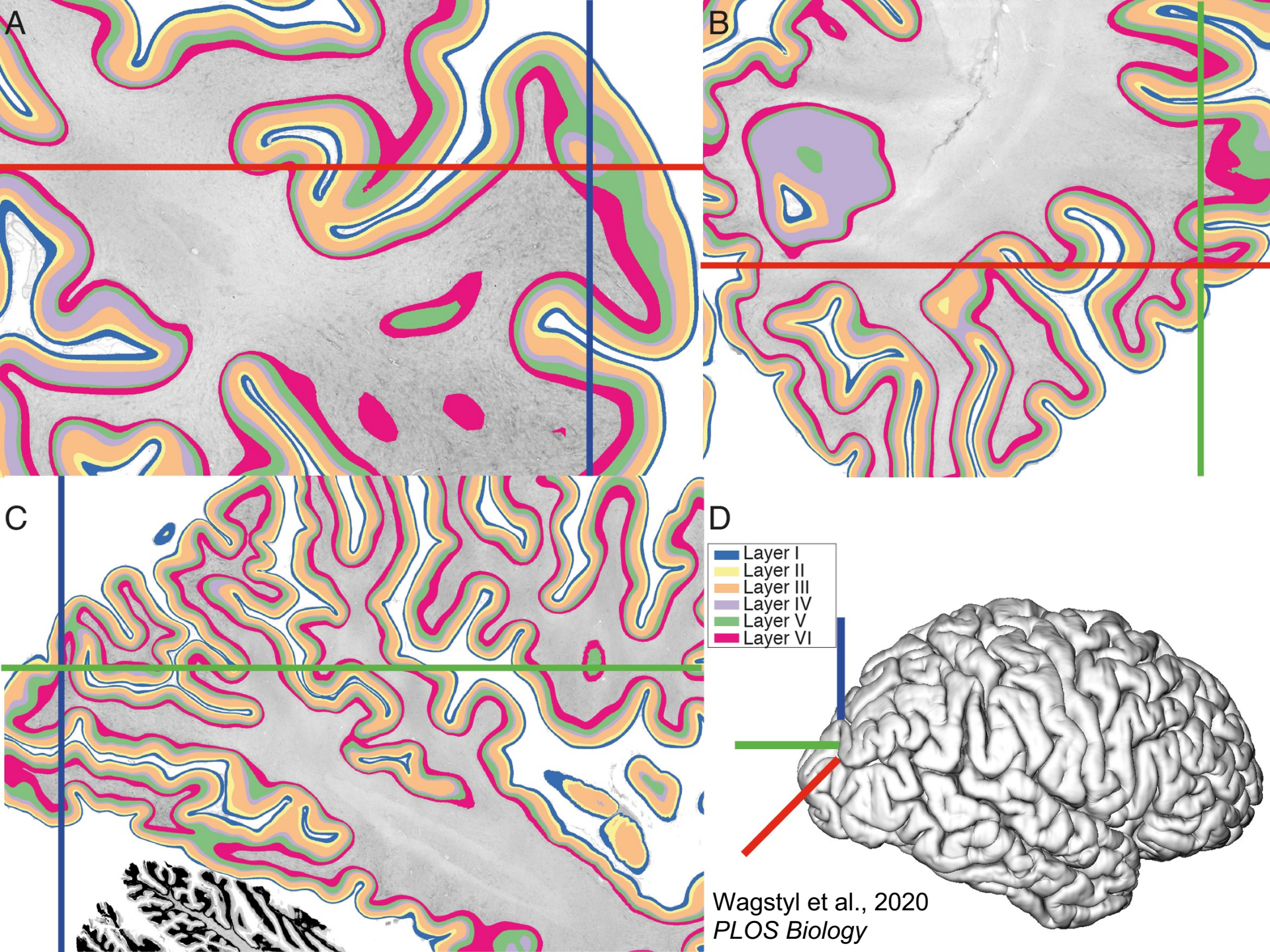
Requires large training dataset -> 1D profile-based approach



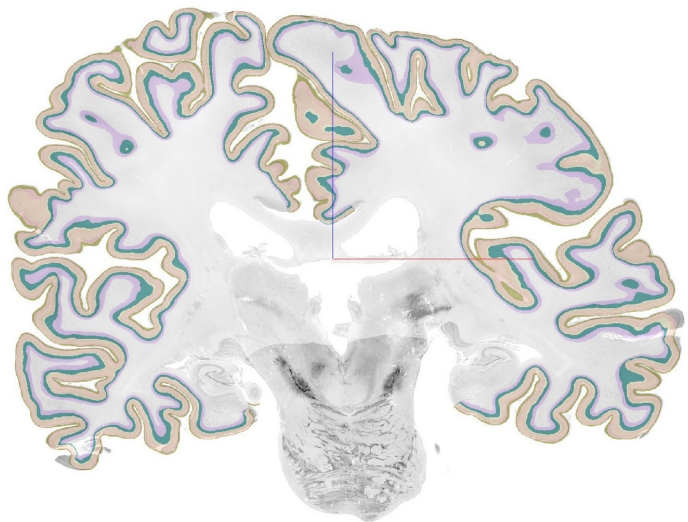
Manual segmentation of training data

- 60 training regions at manually labelled $5\mu\text{m}$ resolution.
- Over 500k labelled training profiles.





Human Brain Project Atlas

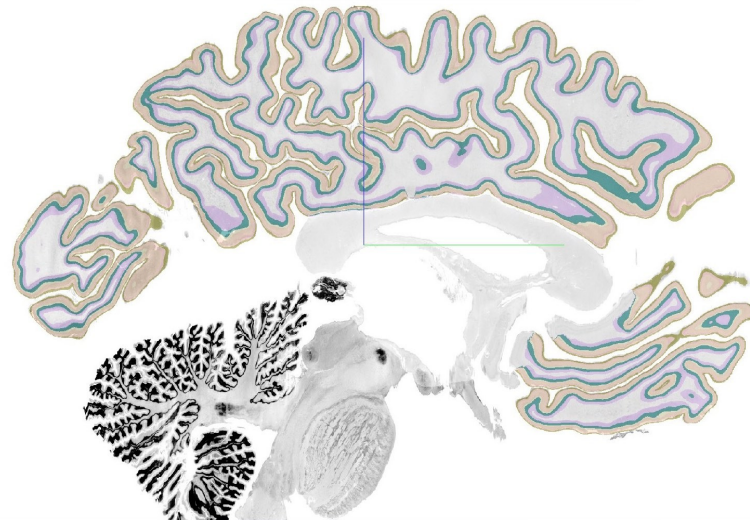


10 mm

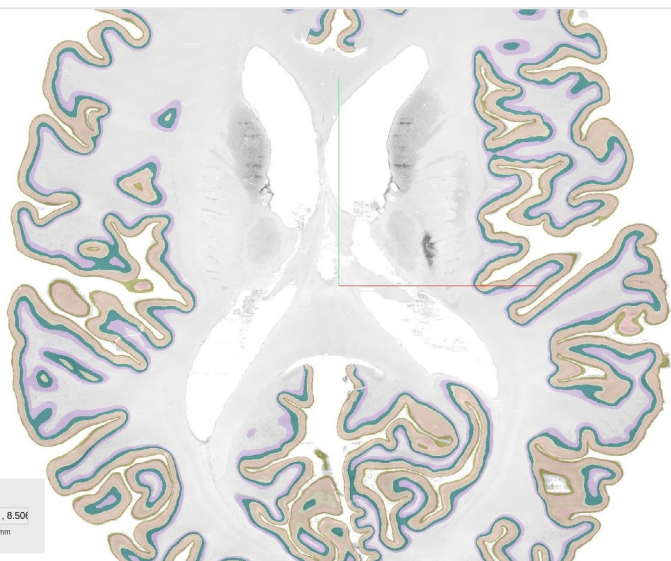
Template(Big Brain (Histology))

Parcellation(BigBrain Cortical Layers Segmentation)

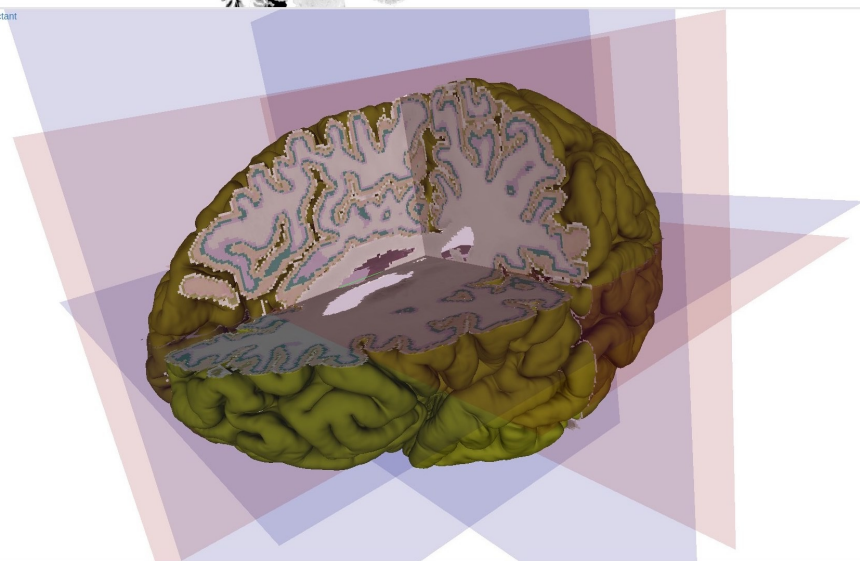
Search region in BigBrain Cortical Lay



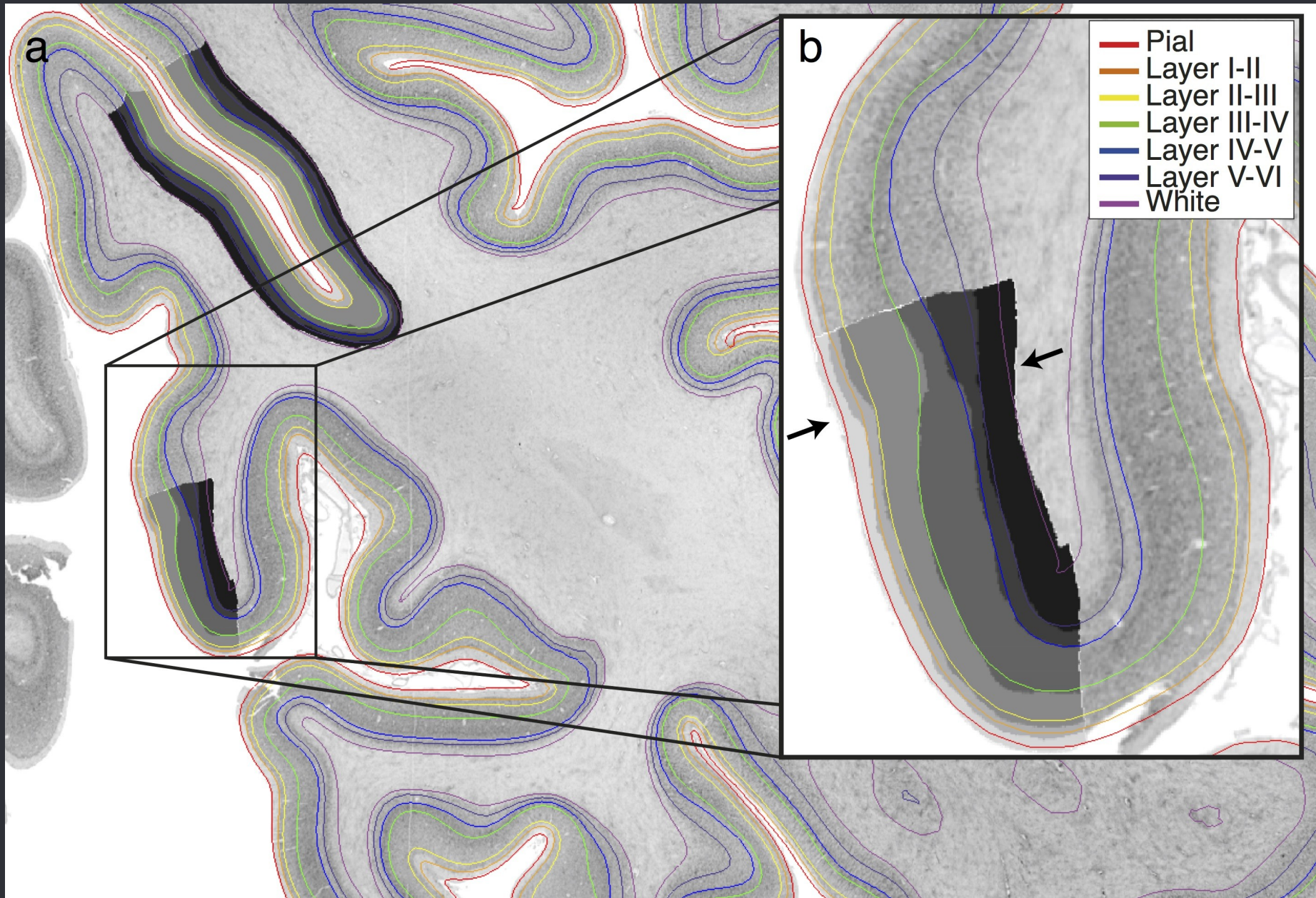
toggle frontal octant



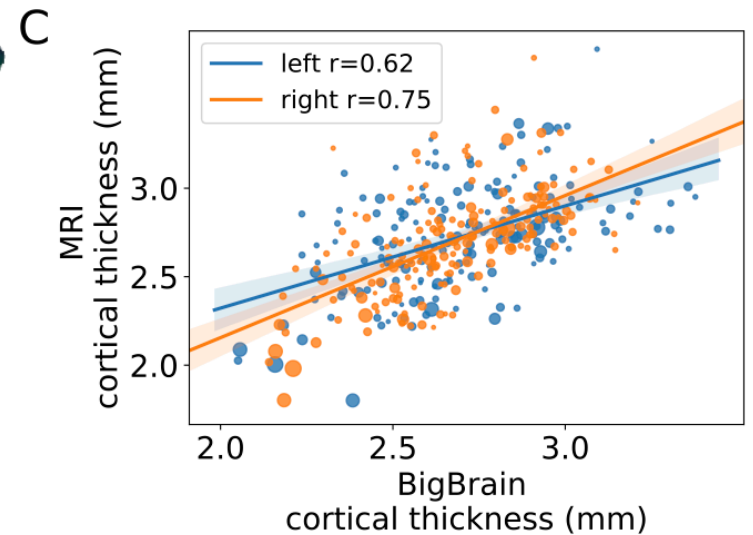
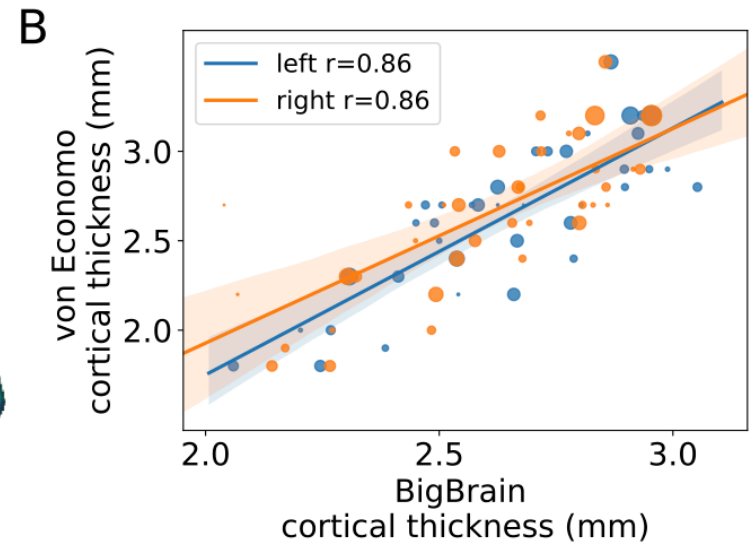
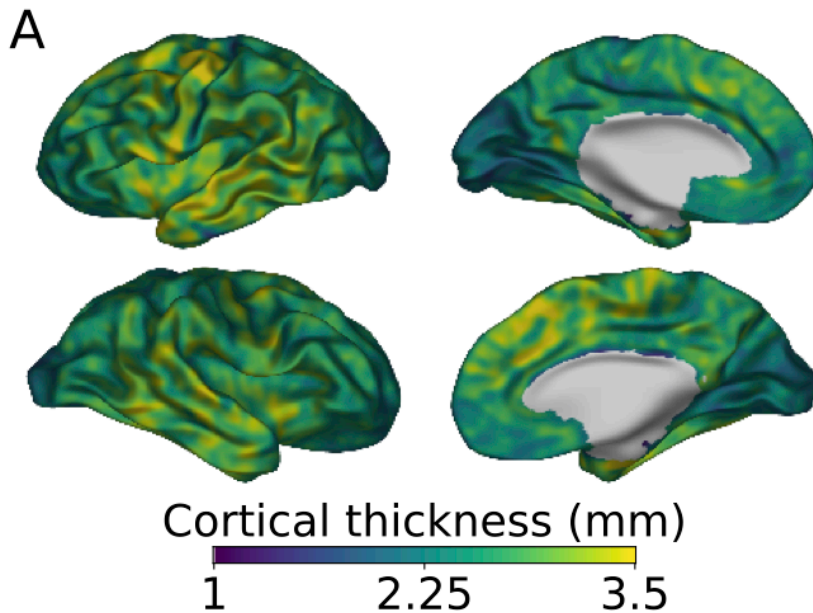
reset: position rotation zoom
space: physical
Navigation: -0.991mm, -2.330mm, 8.50f
Mouse: -0.991mm, 89.987mm, 55.865mm



V1 V2 layer thickness differences

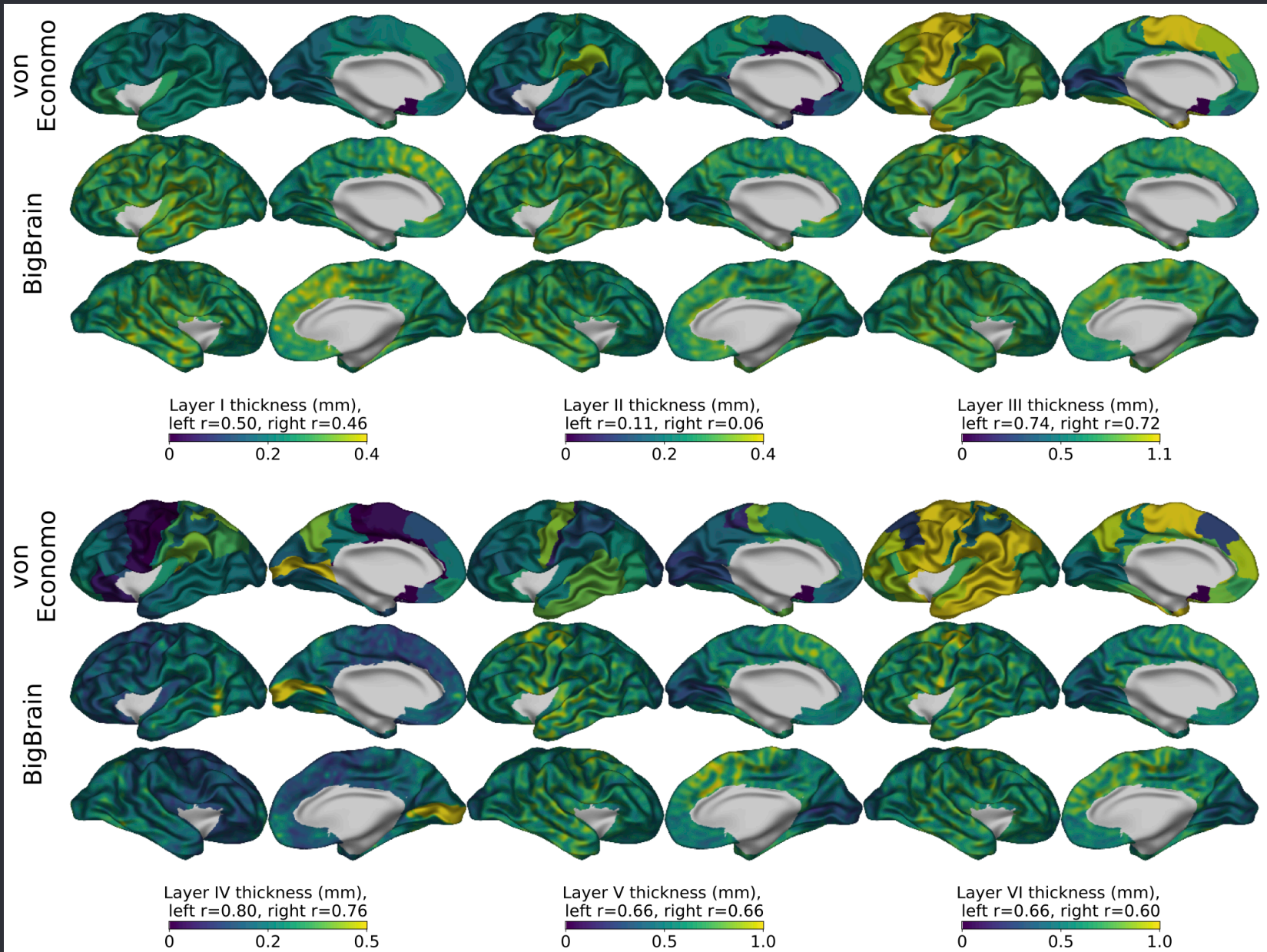


● Total cortical thickness



Comparison of BigBrain thickness with von Economo (B) and HCP (C)

Laminar thicknesses

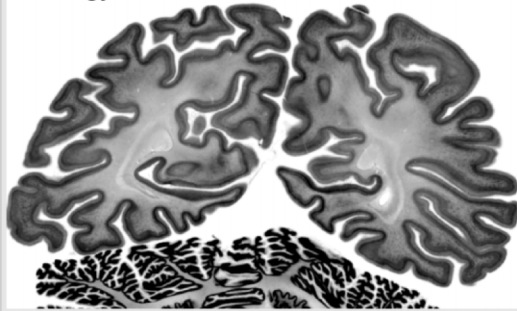


Summary

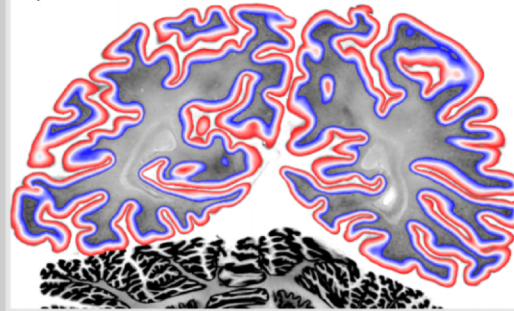
- BigBrain 3D atlas of cortical layers
- Intensity profiles describe laminar structure
- Surface atlas of cortical and laminar thickness
- Links micro-, meso- and *in vivo* neuroimaging

Whole brain from BigBrain

Histology data

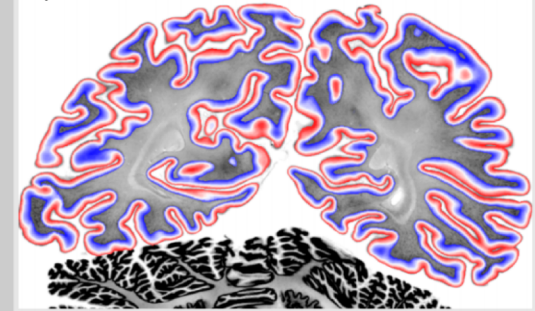


Equi-distant metric

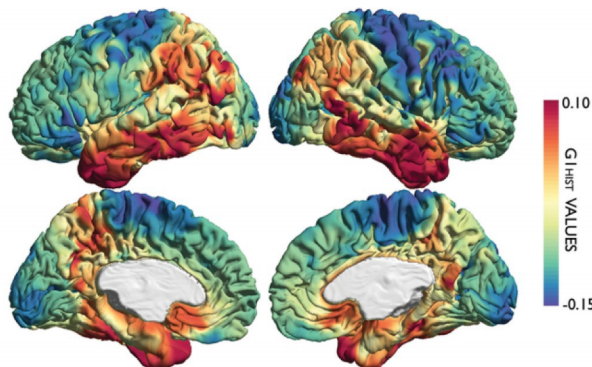


Huber et al., *BioRxiv* 2020

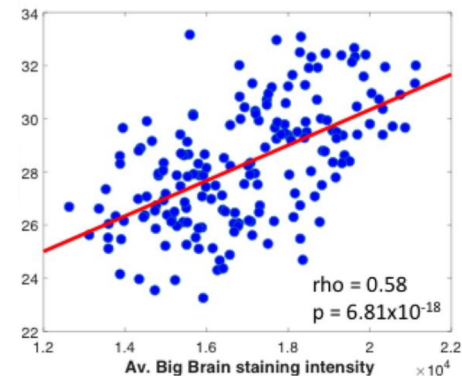
Equi-volume metric



Paquola et al., *PLOS Biology* 2020



McColgan et al., *BioRxiv* 2020



● Thanks to:

Montreal Neurological Institute:
Claude Lepage,
Lindsay Lewis,
Thomas Funck,
Alan C. Evans

Julich Forschungszentrum:
Hannah Spitzer
Sebastian Bludau
Nicola Palomermo-Gallagher
Timo Dickscheid
Karl Zilles
Katrin Amunts

Montreal Institute for Learning Algorithms:
Adriana Romero, Joseph Paul Cohen,
Petar Velickovic, Stephanie Larocque,
Guillem Cucurull, Yoshua Bengio

