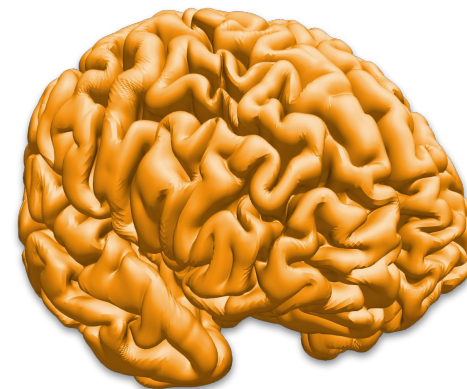
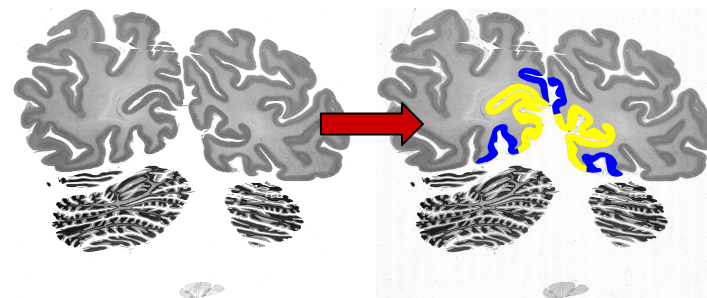


Convolutional Neural Networks for Efficient Mapping of Cytoarchitectonic Areas across Full Stacks of Histological Human Brain Sections

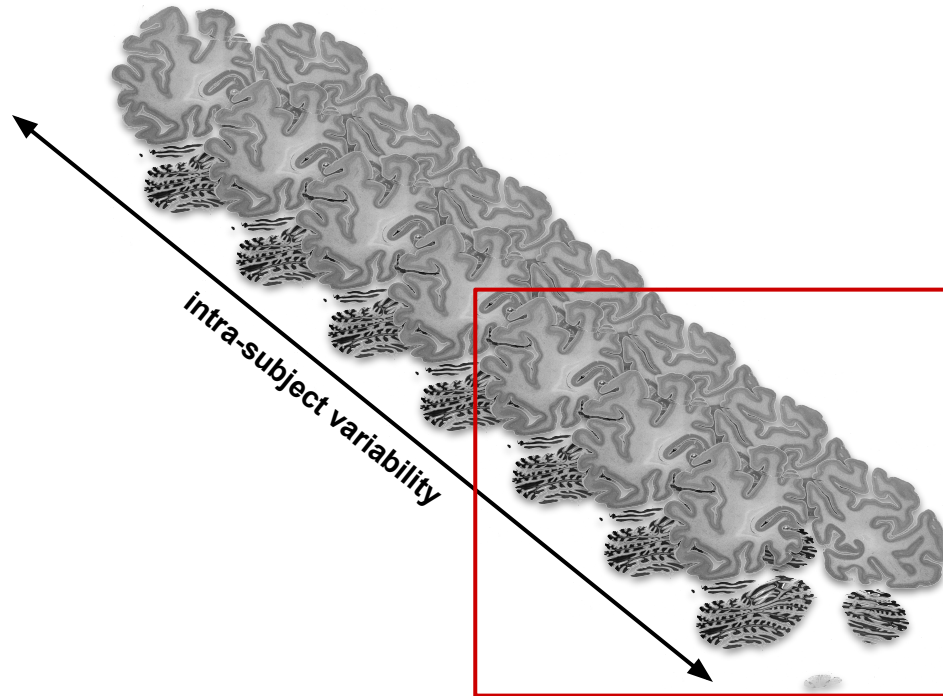
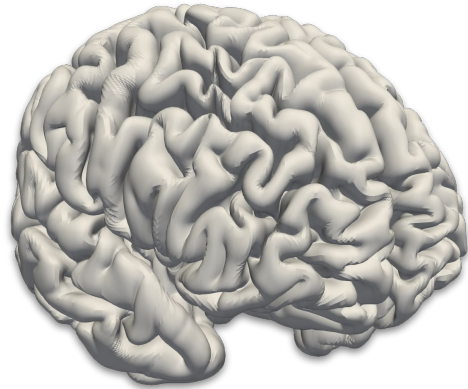
Christian Schiffer (c.schiffer@fz-juelich.de)
INM-1, Research Centre Jülich, Germany



← inter-subject variability →

Convolutional Neural Networks for Efficient Mapping of Cytoarchitectonic Areas across Full Stacks of Histological Human Brain Sections

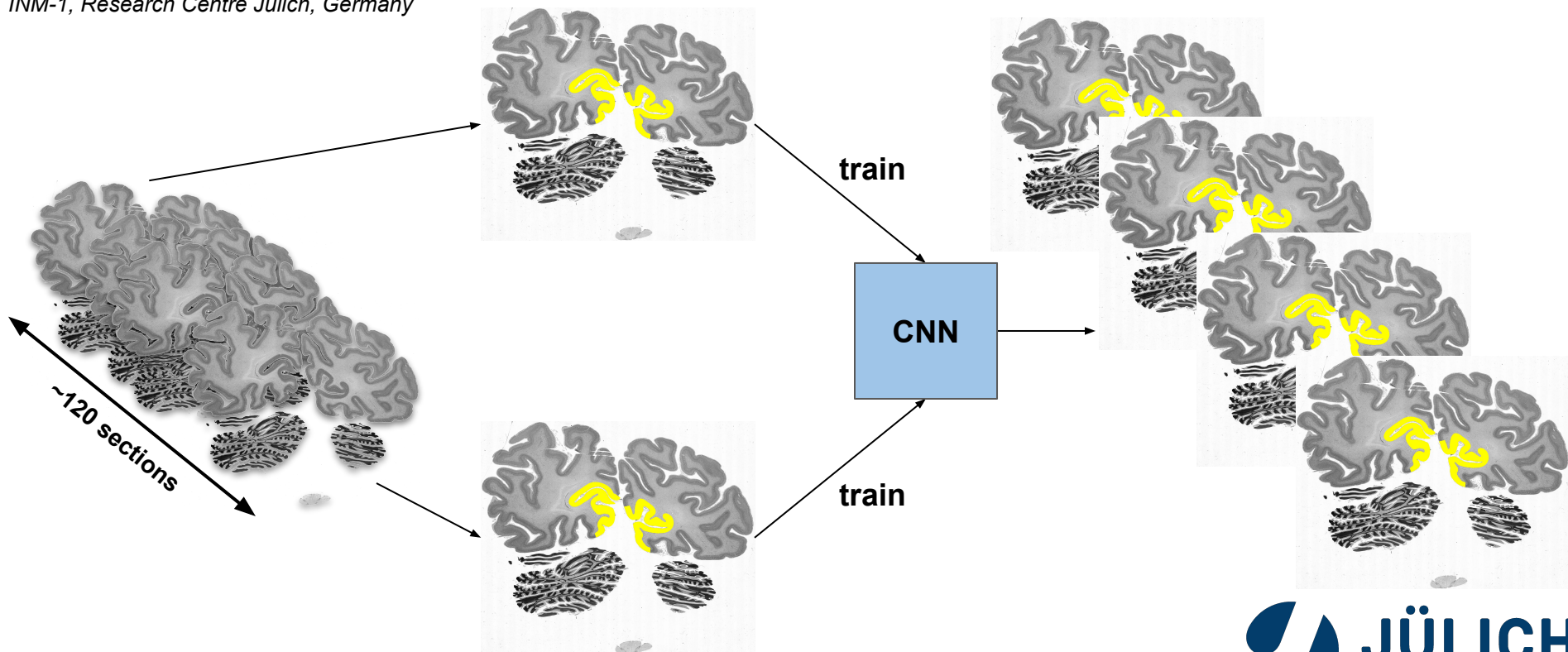
Christian Schiffer (c.schiffer@fz-juelich.de)
INM-1, Research Centre Jülich, Germany



Convolutional Neural Networks for Efficient Mapping of Cytoarchitectonic Areas across Full Stacks of Histological Human Brain Sections

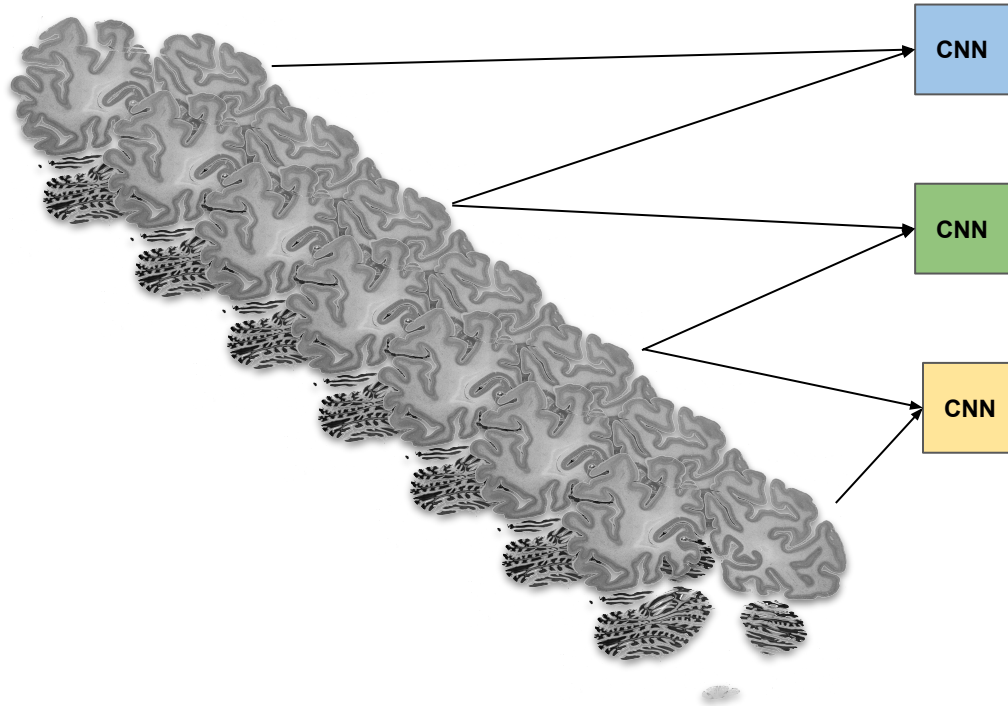
Christian Schiffer (c.schiffer@fz-juelich.de)

INM-1, Research Centre Jülich, Germany



Convolutional Neural Networks for Efficient Mapping of Cytoarchitectonic Areas across Full Stacks of Histological Human Brain Sections

Christian Schiffer (c.schiffer@fz-juelich.de)
INM-1, Research Centre Jülich, Germany



Results

Good performance obtained on

- 18 areas from BigBrain
- 2 areas from a silver-stained brain
- 2 areas from a Nissl-stained brain

3D Reconstruction of *hOc1*, *hOc2*, *hOc3v* and *hOc5* in BigBrain

